

EI24 Antibody

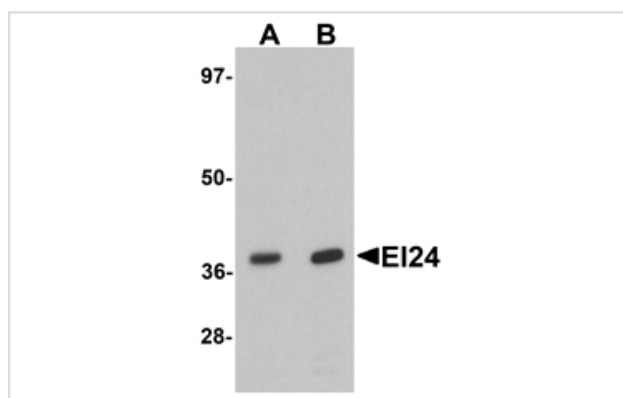
Catalog No: #25356

Orders: order@signalwayantibody.comSupport: tech@signalwayantibody.com

Description

Product Name	EI24 Antibody
Host Species	Rabbit
Clonality	Polyclonal
Purification	Affinity chromatography purified via peptide column
Applications	ELISA WB
Species Reactivity	Hu Ms Rt
Specificity	At least two isoforms of EI24 are known to exist; this antibody will only detect the larger isoform.
Immunogen Type	Peptide
Immunogen Description	Raised against a 19 amino acid peptide near the carboxy terminus of human EI24.
Target Name	EI24
Other Names	Etoposide-induced 24, PIG8, EPG4, TP53I8
Accession No.	Swiss-Prot:O14681Gene ID:9538
Uniprot	O14681
GeneID	9538;
Concentration	1mg/ml
Formulation	Supplied in PBS containing 0.02% sodium azide.
Storage	Can be stored at -20°C, stable for one year. As with all antibodies care should be taken to avoid repeated freeze thaw cycles. Antibodies should not be exposed to prolonged high temperatures.

Images



Western blot analysis of EI24 in rat liver tissue lysate with EI24 antibody at (A) 1 and (B) 2 ug/mL.

Background

The etoposide-induced 24 (EI24) protein is an immediate-early induction target of p53-mediated apoptosis and functions as a tumor suppressor. EI24 contains six transmembrane domains and is localized to the endoplasmic reticulum (ER). It binds to Bcl-2 and may contribute to apoptosis by modulating the activity and function of Bcl-2. EI24 is highly mutated in aggressive breast cancers and its loss in breast cancer tissue correlates with tumor invasiveness. Similar findings in invasive cervical carcinoma suggest that EI24 may be a promising therapeutic target in the treatment of invasive cancer.

Note: This product is for in vitro research use only