

## ECRG2 Antibody

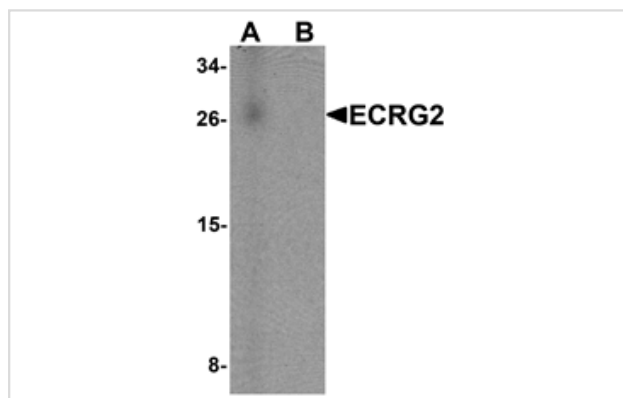
Catalog No: #25368

Orders: [order@signalwayantibody.com](mailto:order@signalwayantibody.com)Support: [tech@signalwayantibody.com](mailto:tech@signalwayantibody.com)

## Description

Product Name	ECRG2 Antibody
Host Species	Rabbit
Clonality	Polyclonal
Purification	Affinity chromatography purified via peptide column
Applications	ELISA WB
Species Reactivity	Hu Ms Rt
Specificity	ECRG2 antibody is predicted to not cross-react with other ECRG family members
Immunogen Type	Peptide
Immunogen Description	Raised against a 16 amino acid peptide near the carboxy terminus of human ECRG2.
Target Name	ECRG2
Other Names	Esophageal cancer-susceptibility gene 2 protein, ECG2, serine protease inhibitor Kazal-type 7; SPINK7
Accession No.	Swiss-Prot:P58062Gene ID:84651
Uniprot	P58062
GeneID	84651;
Concentration	1mg/ml
Formulation	Supplied in PBS containing 0.02% sodium azide.
Storage	Can be stored at -20°C, stable for one year. As with all antibodies care should be taken to avoid repeated freeze thaw cycles. Antibodies should not be exposed to prolonged high temperatures.

## Images



Western blot analysis of ECRG2 in human lung tissue lysate with ECRG2 antibody at 1 ug/mL in (A) the absence and (B) the presence of blocking peptide.

## Background

The esophageal cancer-susceptibility gene 2 (ECRG2), also known as SPINK7, is a novel tumor suppressor gene identified from the human esophagus. It interacts directly with metallothionein 2A and urokinase-type plasminogen activator (uPA), and downregulates the activity of uPA, leading to reduced cancer cell migration, invasion and metastasis. ECRG2 forms a complex with uPA and its receptor uPAR, modifying the dynamic association of uPAR with beta1 integrins and disrupting the Src/MAP kinase pathway that normally stimulates cell migration and invasion. ECRG2 may thus represent a novel therapeutic target for cancer.

---

Note: This product is for in vitro research use only