

AFAP1L Antibody

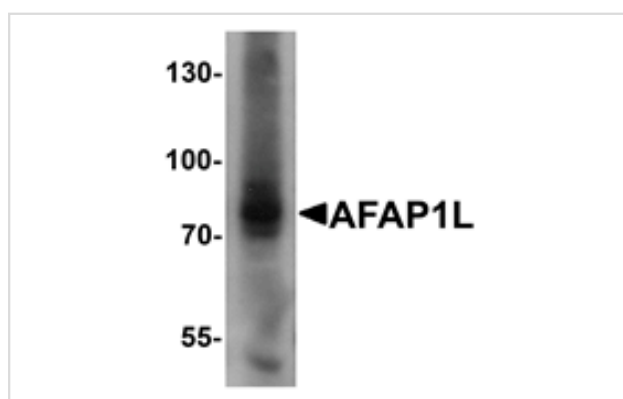
Catalog No: #25381

Orders: order@signalwayantibody.comSupport: tech@signalwayantibody.com

Description

| | |
|-----------------------|---|
| Product Name | AFAP1L Antibody |
| Host Species | Rabbit |
| Clonality | Polyclonal |
| Purification | Affinity chromatography purified via peptide column |
| Applications | ELISA WB |
| Species Reactivity | Hu Ms |
| Specificity | At least four isoforms of AFAP1L1 are known to exist. This antibody is predicted to not cross-react with other AFAP family members. |
| Immunogen Type | Peptide |
| Immunogen Description | Raised against a 19 amino acid peptide near the amino terminus of human AFAP1L1. |
| Target Name | AFAP1L |
| Other Names | Actin filament associated protein 1-like 1 |
| Accession No. | Swiss-Prot:Q8TED9Gene ID:134265 |
| Uniprot | Q8TED9 |
| GeneID | 134265; |
| Concentration | 1mg/ml |
| Formulation | Supplied in PBS containing 0.02% sodium azide. |
| Storage | Can be stored at -20°C, stable for one year. As with all antibodies care should be taken to avoid repeated freeze thaw cycles. Antibodies should not be exposed to prolonged high temperatures. |

Images



Western blot analysis of AFAP1L1 in A549 cell lysate with AFAP1L1 antibody at 1 ug/mL.

Background

The actin filament-associated protein 1 (AFAP1)-like 1 protein is one of three members in the AFAP1 family of adaptor proteins. Like AFAP1, AFAP1L1 is an actin binding protein that has a role in actin cytoskeleton arrangement, but AFAP1L1 is thought to have a unique function distinct from AFAP1. AFAP1L1 colocalizes with cortactin and localizes to invadosomes, highly dynamic, actin-rich adhesion structures harboring metalloproteases, suggesting that AFAP1L1 affects invadosome formation (1, 4). Recent reports suggest that AFAP1L1 can be used as a prognostic marker for spindle cell sarcomas.

Note: This product is for in vitro research use only