

PTCHD2 Antibody

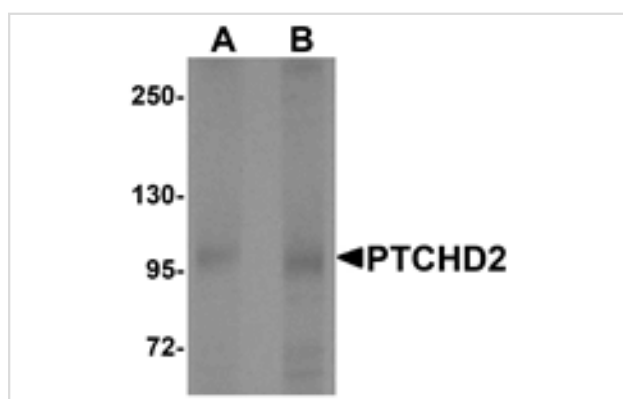
Catalog No: #25404

Orders: order@signalwayantibody.comSupport: tech@signalwayantibody.com

Description

Product Name	PTCHD2 Antibody
Host Species	Rabbit
Clonality	Polyclonal
Purification	Affinity chromatography purified via peptide column
Applications	ELISA WB
Species Reactivity	Hu Ms Rt
Specificity	At least two isoforms of PTCHD2 are known to exist. This antibody is specific for PTCHD2 and will not recognize the other DISP family of proteins.
Immunogen Type	Peptide
Immunogen Description	Raised against a 19 amino acid peptide from near the center of human PTCHD2.
Target Name	PTCHD2
Other Names	Patched domain-containing protein 2, DISP3
Accession No.	Q9P2K9
Uniprot	Q9P2K9
GeneID	57540;
Concentration	1mg/ml
Formulation	Supplied in PBS containing 0.02% sodium azide.
Storage	Can be stored at -20°C, stable for one year. As with all antibodies care should be taken to avoid repeated freeze thaw cycles. Antibodies should not be exposed to prolonged high temperatures.

Images



Western blot analysis of PTCHD2 in mouse kidney tissue lysate with PTCHD2 antibody at (A) 1 and (B) 2 ug/mL.

Background

PTCHD2, also known as DISP3, is the third of three known homologs of the *D. melanogaster* protein Dispatched. It is a multi-transmembrane protein containing two PTCH/DISP domains and is thought to be involved in the release of lipid-anchored secreted proteins. Like DISP1 and DISP2, DISP3 has been implicated in signaling pathways during embryogenesis, tissue regeneration, and carcinogenesis. It is highly expressed in Purkinje cells, hippocampal neurons, and retinal ganglion cells. Recently, it has been shown that PTCHD2 localizes within the endoplasmic reticulum and colocalizes with cholesterol, and given that its expression is regulated by thyroid hormone (T3), it has been suggested that DISP3 may be a link between thyroid

hormone and cholesterol metabolism.

Note: This product is for in vitro research use only