

MLIP Antibody

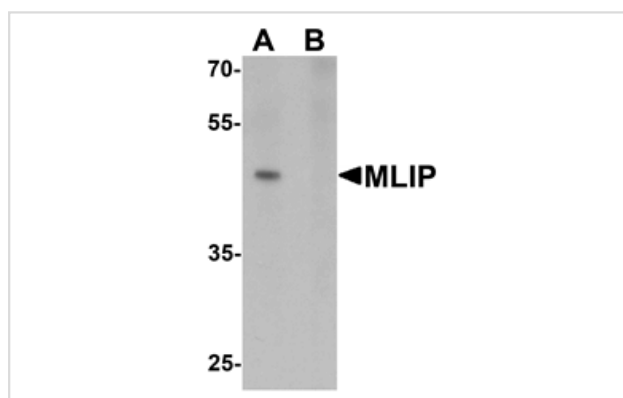
Catalog No: #25425

Orders: order@signalwayantibody.comSupport: tech@signalwayantibody.com

Description

Product Name	MLIP Antibody
Host Species	Rabbit
Clonality	Polyclonal
Purification	Affinity chromatography purified via peptide column
Applications	ELISA WB
Species Reactivity	Hu
Specificity	At least three isoforms of MLIP are known to exist.
Immunogen Type	Peptide
Immunogen Description	Raised against a 16 amino acid peptide near the carboxy terminus of human MLIP.
Target Name	MLIP
Other Names	Muscle enriched A-type lamin interacting protein, C6orf142
Accession No.	Swiss-Prot:Q5VWP3Gene ID:90523
Uniprot	Q5VWP3
GeneID	90523;
Concentration	1mg/ml
Formulation	Supplied in PBS containing 0.02% sodium azide.
Storage	Can be stored at -20°C, stable for one year. As with all antibodies care should be taken to avoid repeated freeze thaw cycles. Antibodies should not be exposed to prolonged high temperatures.

Images



Western blot analysis of MLIP in 293 cell lysate with MLIP antibody at 1 ug/mL in (A) the absence and (B) the presence of blocking peptide.

Background

The muscle-enriched A-type lamin-interacting protein (MLIP) is ubiquitously expressed, although most predominantly in heart, skeletal and smooth muscle, and interacts directly and co-localizes with lamin A and C in the nuclear envelope. MLIP also co-localizes with promyelocytic leukemia (PML) bodies within the nucleus. Decreasing lamin A/C expression with siRNA results in the upregulation and mislocalization of MLIP, suggesting that MLIP localization to the nuclear envelope is dependent on the lamin proteins. It has been suggested that MLIP may function as a tethering protein linking LMNA to factors within the nuclear envelope or within PML bodies

Note: This product is for in vitro research use only