

NKX2-2 Antibody

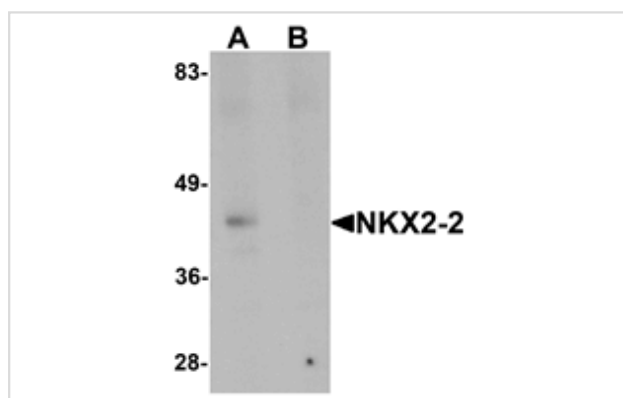
Catalog No: #25430

Orders: order@signalwayantibody.comSupport: tech@signalwayantibody.com

Description

Product Name	NKX2-2 Antibody
Host Species	Rabbit
Clonality	Polyclonal
Purification	Affinity chromatography purified via peptide column
Applications	ELISA WB
Species Reactivity	Hu Ms Rt
Specificity	NKX2-2 antibody is predicted to not cross-react with other NK2 homeobox family members.
Immunogen Type	Peptide
Immunogen Description	Raised against a 19 amino acid peptide near the center of human NKX2-2.
Target Name	NKX2-2
Other Names	NK2 homeobox 2, NKX2B
Accession No.	Swiss-Prot:O95096Gene ID:4821
Uniprot	O95096
GeneID	4821;
Concentration	1mg/ml
Formulation	Supplied in PBS containing 0.02% sodium azide.
Storage	Can be stored at -20°C, stable for one year. As with all antibodies care should be taken to avoid repeated freeze thaw cycles. Antibodies should not be exposed to prolonged high temperatures.

Images



Western blot analysis of NKX2-2 in rat kidney tissue lysate with NKX2-2 antibody at 1 ug/mL in (A) the absence and (B) the presence of blocking peptide.

Background

NKX2-2 (NK2 homeobox 2) is a member of a family of transcription factors that are involved in embryonic development and cell fate. NKX2-2 is crucial in the development of pancreatic islet cell differentiation and activates the ghrelin-promoter in these cells. NKX2-2 is expressed at the onset of pancreatic epithelium formation and becomes restricted to mature α -, β - and PP cells, and in NKX2-2-null mice embryos, all β -cells and most α -cells are replaced by ghrelin-positive cells. NKX2-2 is also thought to be involved in ventral neuronal patterning and floor plate development and commissural axon guidance.

Note: This product is for in vitro research use only