

HHATL Antibody

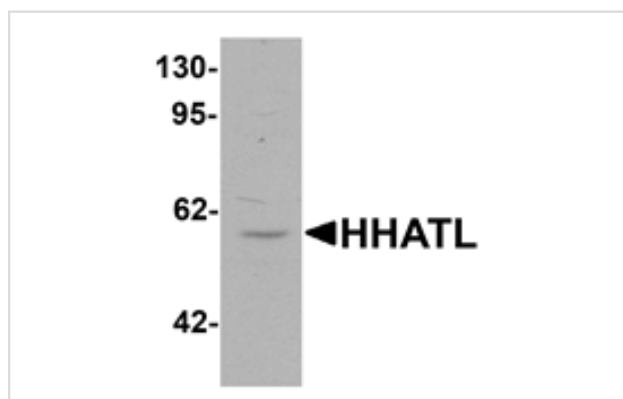
Catalog No: #25470

Orders: order@signalwayantibody.comSupport: tech@signalwayantibody.com

Description

Product Name	HHATL Antibody
Host Species	Rabbit
Clonality	Polyclonal
Purification	Affinity chromatography purified via peptide column
Applications	ELISA WB
Species Reactivity	Hu Ms Rt
Immunogen Type	Peptide
Immunogen Description	19 amino acid peptide near the amino terminus of human HHATL.
Target Name	HHATL
Other Names	Protein-cysteine N-palmitoyltransferase HHAT-like protein, GUP1, OACT3, MSTP002, MBOAT3, C3orf3
Accession No.	Swiss-Prot:Q9HCP6Gene ID:57467
Uniprot	Q9HCP6
GeneID	57467;
Concentration	1mg/ml
Formulation	PBS containing 0.02% sodium azide.
Storage	Store at 4°C for three months and -20°C, stable for up to one year.

Images



Western blot analysis of HHATL in 3T3 cell lysate with HHATL antibody at 1 ug/mL.

Note: This product is for in vitro research use only