

WDR5 Antibody

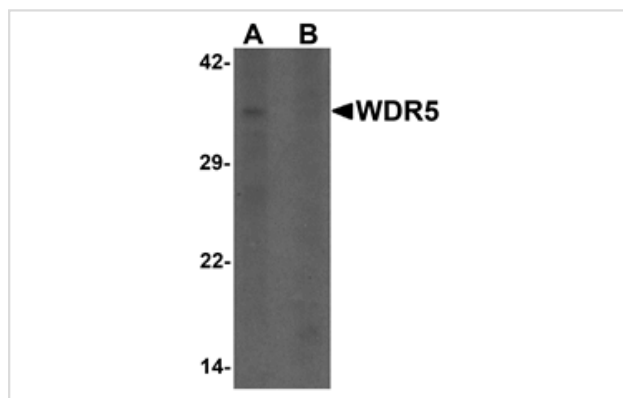
Catalog No: #25482

Orders: order@signalwayantibody.comSupport: tech@signalwayantibody.com

Description

Product Name	WDR5 Antibody
Host Species	Rabbit
Clonality	Polyclonal
Purification	Affinity chromatography purified via peptide column
Applications	ELISA WB
Species Reactivity	Hu
Specificity	WDR5 antibody is human specific. WDR5 antibody is predicted to not cross-react with other WDR family members.
Immunogen Type	Peptide
Immunogen Description	19 amino acid peptide near the amino terminus of human WDR5.
Target Name	WDR5
Other Names	WD repeat domain 5, WD repeat-containing protein 5, SWD3, BIG-3
Accession No.	Swiss-Prot:P61964Gene ID:11091
Uniprot	P61964
GeneID	11091;
Concentration	1mg/ml
Formulation	PBS containing 0.02% sodium azide.
Storage	Store at 4°C for three months and -20°C, stable for up to one year.

Images



Western blot analysis of WDR5 in 293 cell lysate with WDR5 antibody at 1 ug/ml in (A) the absence and (B) the presence of blocking peptide.

Note: This product is for in vitro research use only