

ZF21 Antibody

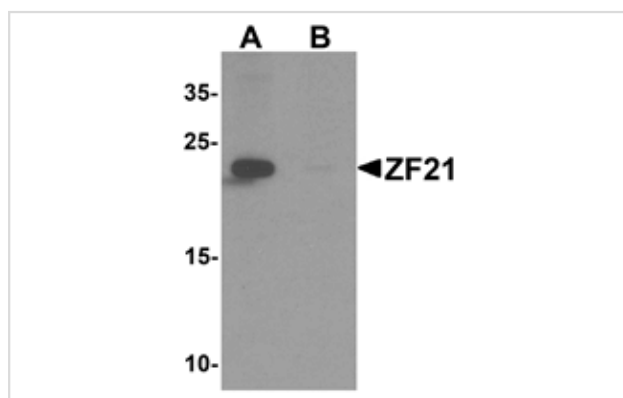
Catalog No: #25514

Orders: order@signalwayantibody.comSupport: tech@signalwayantibody.com

Description

Product Name	ZF21 Antibody
Host Species	Rabbit
Clonality	Polyclonal
Purification	Affinity chromatography purified via peptide column
Applications	ELISA WB
Species Reactivity	Hu Ms Rt
Specificity	At least two isoforms of ZF21 are known to exist; this antibody will detect both isoforms.
Immunogen Type	Peptide
Immunogen Description	15 amino acid peptide near the amino terminus of human ZF21.
Target Name	ZF21
Other Names	Zinc finger FYVE domain-containing protein 21, ZFYVE21
Accession No.	Swiss-Prot:Q9BQ24Gene ID:79038
Uniprot	Q9BQ24
GeneID	79038;
Concentration	1mg/ml
Formulation	PBS containing 0.02% sodium azide.
Storage	Store at 4°C for three months and -20°C, stable for up to one year.

Images



Western blot analysis of ZF21 in 3T3 cell tissue lysate with ZF21 antibody at 1 ug/ml in (A) the absence and (B) the presence of blocking peptide.

Note: This product is for in vitro research use only