

## CRIM2 Antibody

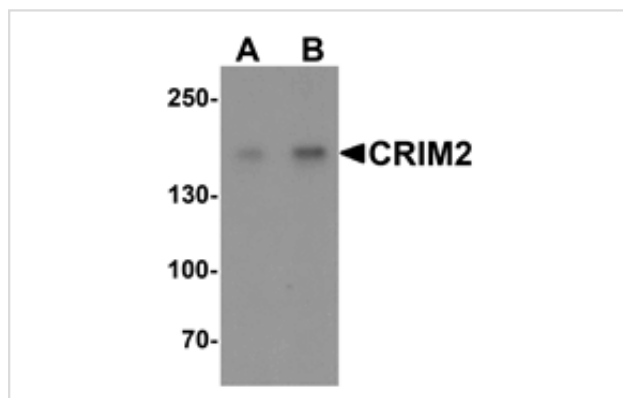
Catalog No: #25517

Orders: [order@signalwayantibody.com](mailto:order@signalwayantibody.com)Support: [tech@signalwayantibody.com](mailto:tech@signalwayantibody.com)

## Description

Product Name	CRIM2 Antibody
Host Species	Rabbit
Clonality	Polyclonal
Purification	Affinity chromatography purified via peptide column
Applications	ELISA WB
Species Reactivity	Hu Ms Rt
Specificity	At least two isoforms of CRIM2 are known to exist; this antibody will only detect the larger isoform. CRIM2 antibody is predicted to not cross-react with CRIM1.
Immunogen Type	Peptide
Immunogen Description	15 amino acid peptide near the carboxy terminus of human CRIM2.
Target Name	CRIM2
Other Names	Cysteine-rich motor neuron 2 protein, CRIM-2, kielin/chordin-like protein, KCP1, NET67
Accession No.	Swiss-Prot:Q6ZWJ8Gene ID:375616
Uniprot	Q6ZWJ8
GeneID	375616;
Concentration	1mg/ml
Formulation	PBS containing 0.02% sodium azide.
Storage	Store at 4°C for three months and -20°C, stable for up to one year.

## Images



Western blot analysis of CRIM2 in Jurkat cell lysate with CRIM2 antibody at (A) 1 and (B) 2 ug/ml.

Note: This product is for in vitro research use only