

TET3 Antibody

Catalog No: #25532

Orders: order@signalwayantibody.comSupport: tech@signalwayantibody.com

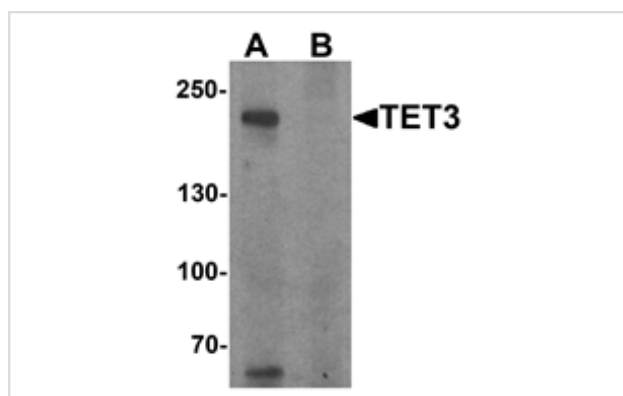
Description

Product Name	TET3 Antibody
Host Species	Rabbit
Clonality	Polyclonal
Purification	Affinity chromatography purified via peptide column
Applications	ELISA WB
Species Reactivity	Hu Ms Rt
Specificity	At least three isoforms of TET3 are known to exist. TET3 antibody is predicted to not cross react with other TET proteins.
Immunogen Type	Peptide
Immunogen Description	17 amino acid peptide near the carboxy terminus of human TET3.
Target Name	TET3
Other Names	Ten-eleven-translocation family 3, hCG_40738
Accession No.	Swiss-Prot:O43151Gene ID:200424
Uniprot	O43151
GeneID	200424;
Concentration	1mg/ml
Formulation	PBS containing 0.02% sodium azide.
Storage	Store at 4°C for three months and -20°C, stable for up to one year.

Application Details

Predicted MW: 183kd

Images



Western blot analysis of TET3 in SK-N-SH cell lysate with TET3 antibody at 1 ug/ml in (A) the absence and (B) the presence of blocking peptide.

Note: This product is for in vitro research use only