

## Rel(Ab-503) Antibody

Catalog No: #21020

Package Size: #21020-1 50ul #21020-2 100ul

Orders: [order@signalwayantibody.com](mailto:order@signalwayantibody.com)Support: [tech@signalwayantibody.com](mailto:tech@signalwayantibody.com)

## Description

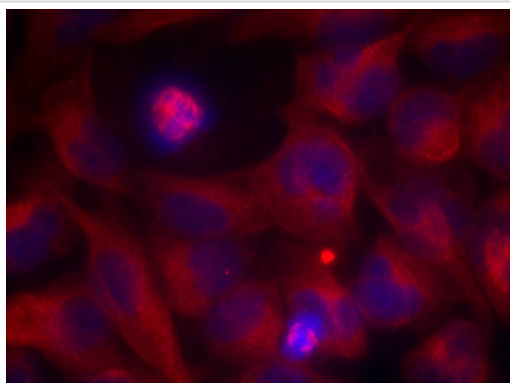
Product Name	Rel(Ab-503) Antibody
Host Species	Rabbit
Clonality	Polyclonal
Purification	Antibodies were produced by immunizing rabbits with synthetic peptide and KLH conjugates. Antibodies were purified by affinity-chromatography using epitope-specific peptide.
Applications	IF
Species Reactivity	Hu
Specificity	The antibody detects endogenous level of total Rel protein.
Immunogen Type	Peptide-KLH
Immunogen Description	Peptide sequence around aa.501~505 (T-S-S-D-S) derived from Human Rel.
Target Name	Rel
Other Names	C-Rel
Accession No.	Swiss-Prot: Q04864NCBI Protein: NP_002899.1
Uniprot	Q04864
GeneID	5966;
Concentration	1.0mg/ml
Formulation	Supplied at 1.0mg/mL in phosphate buffered saline (without Mg <sup>2+</sup> and Ca <sup>2+</sup> ), pH 7.4, 150mM NaCl, 0.02% sodium azide and 50% glycerol.
Storage	Store at -20°C for long term preservation (recommended). Store at 4°C for short term use.

## Application Details

Predicted MW: 78kd

Immunofluorescence: 1:100~1:200

## Images



Immunofluorescence staining of methanol-fixed HeLa cells using Rel(Ab-503) Antibody #21020.

## Background

The REL gene encodes c-Rel, a transcription factor that is a member of the Rel/NFkB family, which also includes RELA (MIM 164014), RELB (604758), NFkB1 (MIM 164011), and NFkB2 (MIM 164012). These proteins are related through a highly conserved N-terminal region termed the 'Rel domain,' which is responsible for DNA binding, dimerization, nuclear localization, and binding to the NFkB inhibitor (MIM 164008) (Belguise and Sonenshein, 2007 (PubMed18037997)).

Copley RR et al. (2007) Genome Res. 17(9):1327-35.

Liu YW,et al.(2007) Cell Mol Life Sci. 64(24):3282-94.

Banerjee D, (2005) Immunity. 23(4):445-58.

---

Note: This product is for in vitro research use only