

# MD-2 Monoclonal Antibody

Catalog No: #26026

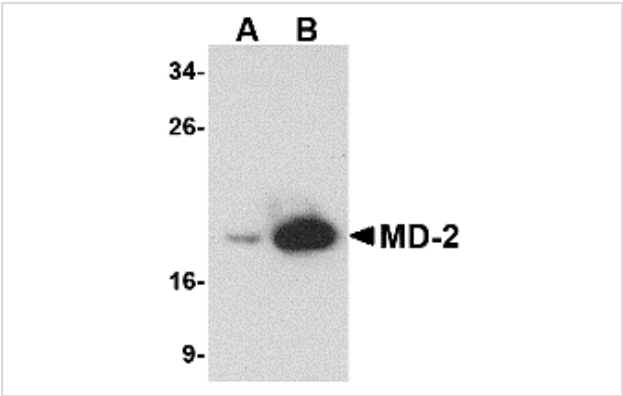


Orders: [order@signalwayantibody.com](mailto:order@signalwayantibody.com)  
Support: [tech@signalwayantibody.com](mailto:tech@signalwayantibody.com)

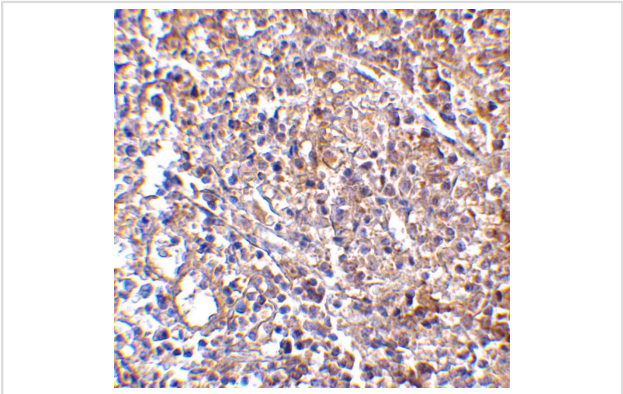
## Description

Product Name	MD-2 Monoclonal Antibody
Host Species	Mouse
Clonality	Monoclonal
Clone No.	mAb (Clone 9F1B1)
Purification	MD-2 Monoclonal Antibody is Protein A purified.
Applications	ELISA WB IHC
Species Reactivity	Hu Ms
Immunogen Type	Recombinant protein
Immunogen Description	Raised against a recombinant protein corresponding to amino acids 2 to 160 of human MD-2
Target Name	MD-2
Other Names	MD-2 (9F1B1): Lymphocyte antigen 96 precursor, ESOP-1
Accession No.	Swiss-Prot:Q9Y6Y9Gene ID:23643
Uniprot	Q9Y6Y9
GeneID	23643;
Concentration	1mg/ml
Formulation	Supplied in PBS containing 0.02% sodium azide.
Storage	Can be stored at -20°C, stable for one year.

## Images



Western blot analysis of (A) 25 and (B) 125 ng of MD-2 recombinant protein with MD-2 antibody at 1 ug/mL.



Immunohistochemistry of MD-2 in human spleen with MD-2 antibody at 2.5 ug/mL.

## Background

---

MD-2 is a member of the Toll/interleukin-1 receptor (TIR) family, a group of proteins that include the Toll-like receptors (TLRs). TLRs are signaling molecules that recognize different pathogen-associated molecular patterns (PAMPs) and serve as an important link between the innate and adaptive immune responses. TLR4, the major signaling receptor for lipopolysaccharide (LPS), requires the binding of MD-2 to its extracellular region for maximal response to LPS. The specificity of this response is determined by the species of MD-2; e.g., human MD-2 transfected into mouse cells can cause mouse TLR4 to react to LPS analogs that are normally antagonistic to human but not mouse TLR4.

---

Note: This product is for in vitro research use only