

MD-2 Monoclonal Antibody

Catalog No: #26027

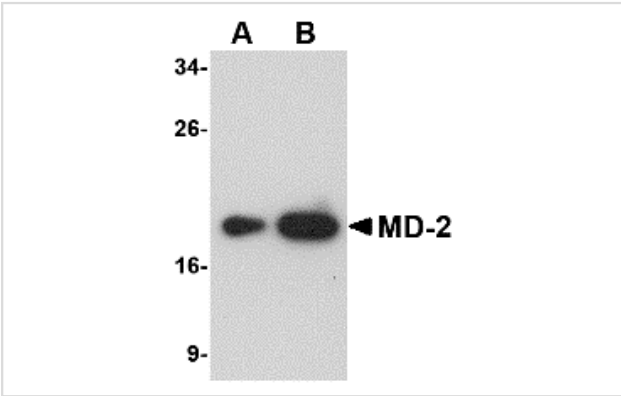


Orders: order@signalwayantibody.com
Support: tech@signalwayantibody.com

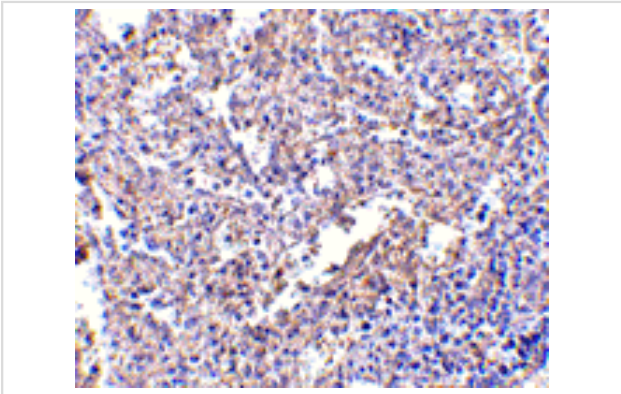
Description

Product Name	MD-2 Monoclonal Antibody
Host Species	Mouse
Clonality	Monoclonal
Clone No.	mAb (Clone 1A2E3)
Purification	Immunoaffinity chromatography purified IgG
Applications	ELISA WB IHC
Species Reactivity	Hu Ms Rt
Immunogen Type	Recombinant protein
Immunogen Description	Raised against a recombinant protein corresponding to amino acids 2 to 160 of human MD-2
Target Name	MD-2
Other Names	MD-2 (1A2E3): Lymphocyte antigen 96 precursor, ESOP-1
Accession No.	Swiss-Prot:Q9Y6Y9Gene ID:23643
Uniprot	Q9Y6Y9
GeneID	23643;
Concentration	1mg/ml
Formulation	Supplied in PBS containing 0.02% sodium azide.
Storage	Can be stored at -20°C, stable for one year.

Images



Western blot analysis of (A) 25 and (B) 125 ng of MD-2 recombinant protein with MD-2 antibody at 1 ug/mL.



Immunohistochemistry of MD-2 in human spleen with MD-2 antibody at 2.5 ug/mL.

Background

MD-2 is a member of the Toll/interleukin-1 receptor (TIR) family, a group of proteins that include the Toll-like receptors (TLRs). TLRs are signaling molecules that recognize different pathogen-associated molecular patterns (PAMPs) and serve as an important link between the innate and adaptive immune responses. TLR4, the major signaling receptor for lipopolysaccharide (LPS), requires the binding of MD-2 to its extracellular region for maximal response to LPS. The specificity of this response is determined by the species of MD-2; e.g., human MD-2 transfected into mouse cells can cause mouse TLR4 to react to LPS analogs that are normally antagonistic to human but not mouse TLR4.

Note: This product is for in vitro research use only