

ATF2(Ab-71 or 53) Antibody

Catalog No: #21031

Package Size: #21031-1 50ul #21031-2 100ul

Orders: order@signalwayantibody.com

Support: tech@signalwayantibody.com

Description

Product Name	ATF2(Ab-71 or 53) Antibody
Host Species	Rabbit
Clonality	Polyclonal
Purification	Antibodies were produced by immunizing rabbits with synthetic peptide and KLH conjugates. Antibodies were purified by affinity-chromatography using epitope-specific peptide.
Applications	WB IHC IF
Species Reactivity	Hu Ms Rt
Specificity	The antibody detects endogenous level of total ATF2 protein.
Immunogen Type	Peptide-KLH
Immunogen Description	Peptide sequence around aa.69~73 or 51~55 (T-P-T-P-T) derived from Human ATF2.
Target Name	ATF2
Other Names	CREB2; CREBP1;
Accession No.	Swiss-Prot: P15336NCBI Protein: NP_001871.2
Uniprot	P15336
GeneID	1386;
Concentration	1.0mg/ml
Formulation	Supplied at 1.0mg/mL in phosphate buffered saline (without Mg ²⁺ and Ca ²⁺), pH 7.4, 150mM NaCl, 0.02% sodium azide and 50% glycerol.
Storage	Store at -20°C for long term preservation (recommended). Store at 4°C for short term use.

Application Details

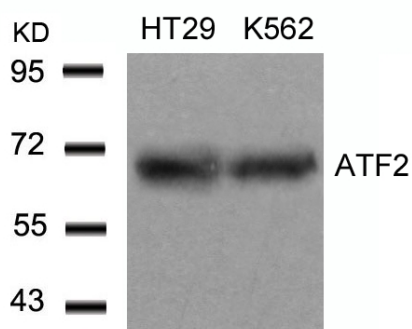
Predicted MW: 65-75 kd

Western blotting: 1:500~1:1000

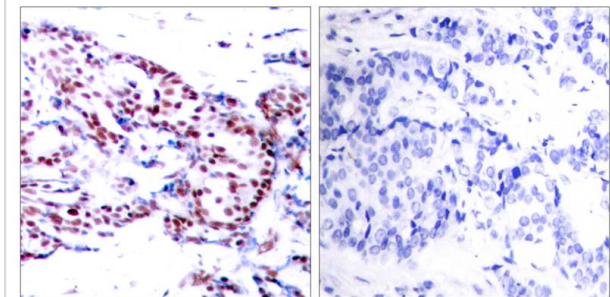
Immunohistochemistry: 1:50~1:100

Immunofluorescence: 1:100~1:200

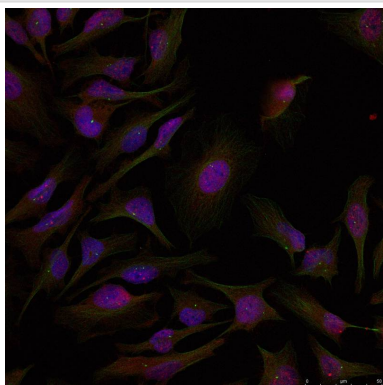
Images



Western blot analysis of extracts from HT29 and K562 cells using ATF2(Ab-71 or 53) Antibody #21031.



Immunohistochemical analysis of paraffin-embedded human breast carcinoma tissue using ATF2(Ab-71 or 53) Antibody #21031(left) or the same antibody preincubated with blocking peptide(right).



Immunofluorescence staining of methanol-fixed HeLa cells using ATF2(Ab-71 or 53) Antibody #21031.

Background

Transcriptional activator, probably constitutive, which binds to the cAMP-responsive element (CRE) (consensus: 5'-GTGACGT[AC][AG]-3'), a sequence present in many viral and cellular promoters. Interaction with JUN redirects JUN to bind to CREs preferentially over the 12-O-tetradecanoylphorbol-13-acetate response elements (TREs) as part of an ATF2-c-Jun complex.

Sevilla A, et al. (2004) J Biol Chem. 279(26):27458-27465.

Waetzig G H, et al. (2002) J Immunol. 168(10): 5342-5351.

Abdel-Hafiz H A, et al. (1992) Mol Endocrinol. 6: 2079-2089.

Gupta S, et al. (1995) Science. 267: 389-393.

Van Dam H, et al. (1995) EMBO J. 14(8): 1798-1811.

Note: This product is for in vitro research use only