

## Twist2 Antibody

Catalog No: #21669

Package Size: #21669-1 50ul #21669-2 100ul

Orders: [order@signalwayantibody.com](mailto:order@signalwayantibody.com)Support: [tech@signalwayantibody.com](mailto:tech@signalwayantibody.com)

## Description

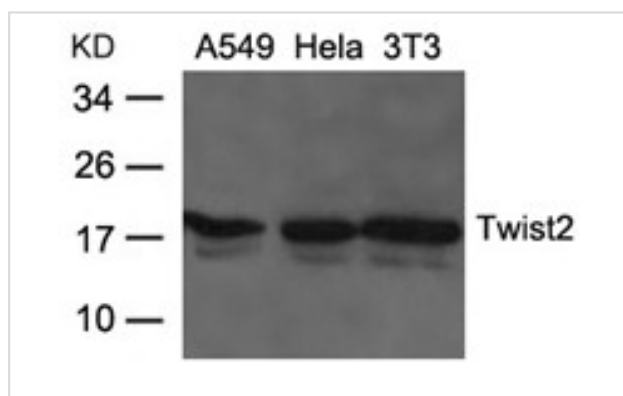
Product Name	Twist2 Antibody
Host Species	Rabbit
Clonality	Polyclonal
Purification	Antibodies were produced by immunizing rabbits with synthetic peptide and KLH conjugates. Antibodies were purified by affinity-chromatography using epitope-specific peptide.
Applications	WB
Species Reactivity	Hu Ms Rt
Specificity	The antibody detects endogenous level of total Twist2 protein.
Immunogen Type	Peptide-KLH
Immunogen Description	Peptide sequence around aa.26~30(P-K-R-F-G) derived from Human Twist2.
Target Name	Twist2
Other Names	DERMO1; MGC117334; bHLHa39
Accession No.	Swiss-Prot: Q8WVJ9NCBI Protein: NP_476527.1
Uniprot	Q8WVJ9
GeneID	117581;
Concentration	1.0mg/ml
Formulation	Supplied at 1.0mg/mL in phosphate buffered saline (without Mg <sup>2+</sup> and Ca <sup>2+</sup> ), pH 7.4, 150mM NaCl, 0.02% sodium azide and 50% glycerol.
Storage	Store at -20°C for long term preservation (recommended). Store at 4°C for short term use.

## Application Details

Western blotting 1:100-1:500

Immunohistochemistry 1:100-1:500

## Images



Western blot analysis of extracts from A549, HeLa and 3T3 cells using Twist2 Antibody #21669.

## Background

Binds to the E-box consensus sequence 5'-CANNTG-3' as a heterodimer and inhibits transcriptional activation by MYOD1, MYOG, MEF2A and MEF2C. Also represses expression of proinflammatory cytokines such as TNFA and IL1B. Involved in postnatal glycogen storage and energy metabolism. Inhibits the premature or ectopic differentiation of preosteoblast cells during osteogenesis, possibly by changing the internal signal transduction response of osteoblasts to external growth factors.

Lee M.S., Lowe G., Flanagan S., Kuchler K., Glackin C.A. Bone 27:591-602(2000)

---

Note: This product is for in vitro research use only