

β-Actin Antibody

Catalog No: #21338



Package Size: #21338-1 50ul #21338-2 100ul

Orders: order@signalwayantibody.com
Support: tech@signalwayantibody.com

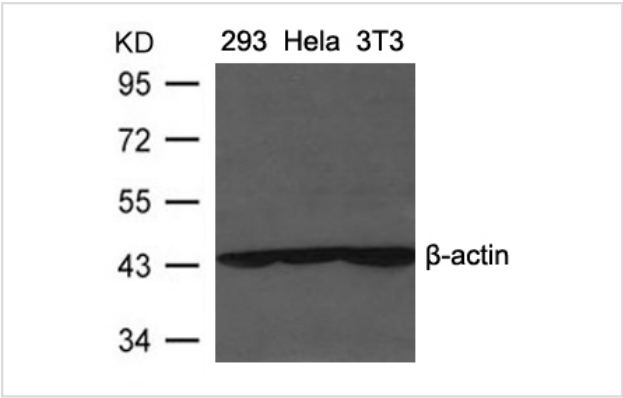
Description

Product Name	β-Actin Antibody
Host Species	Rabbit
Clonality	Polyclonal
Applications	WB
Species Reactivity	Hu Ms Rt
Immunogen Type	Peptide-KLH
Immunogen Description	Peptide sequence around aa.6-10(A-A-L-V-V)derived from Human beta-actin.
Target Name	β-Actin
Other Names	BRWS1, PS1TP5BP1,
Accession No.	Swiss-Prot:P60709Gene ID:60
Uniprot	P60709
GeneID	60;
Concentration	1.0mg/ml

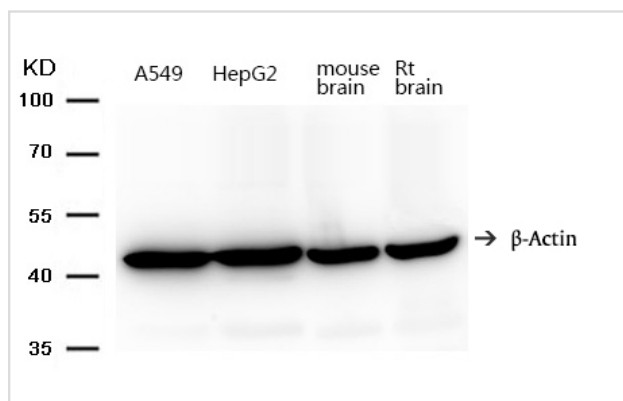
Application Details

Predict MW: 43kd
Western Blot: 1:5000~1:10000

Images



Western blot analysis of extracts from 293, Hela and 3T3 cells using β-actin Antibody #21338.



Western blot analysis of extracts from A549, HepG2, mouse brain and Rt brain using β -actin Antibody #21338.

Background

Actins are highly conserved proteins that are involved in various types of cell motility and are ubiquitously expressed in all eukaryotic cells.

Note: This product is for in vitro research use only