

# Integrin b3(Ab-773) Antibody

Catalog No: #21082



Package Size: #21082-1 50ul #21082-2 100ul

Orders: [order@signalwayantibody.com](mailto:order@signalwayantibody.com)  
Support: [tech@signalwayantibody.com](mailto:tech@signalwayantibody.com)

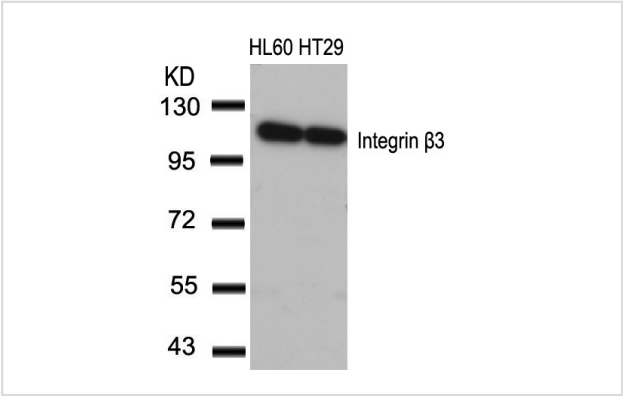
## Description

Product Name	Integrin b3(Ab-773) Antibody
Host Species	Rabbit
Clonality	Polyclonal
Purification	Antibodies were produced by immunizing rabbits with synthetic peptide and KLH conjugates. Antibodies were purified by affinity-chromatography using epitope-specific peptide.
Applications	WB IHC
Species Reactivity	Hu Ms Rt
Specificity	The antibody detects endogenous level of total Integrin b3 protein.
Immunogen Type	Peptide-KLH
Immunogen Description	Peptide sequence around aa. 771~775 (P-L-Y-K-E) derived from Human Integrin b3.
Target Name	Integrin b3
Other Names	Platelet membrane glycoprotein IIIa
Accession No.	Swiss-Prot: P05106NCBI Protein: NP_000203.2
Uniprot	P05106
GeneID	3690;
Concentration	1.0mg/ml
Formulation	Supplied at 1.0mg/mL in phosphate buffered saline (without Mg2+ and Ca2+), pH 7.4, 150mM NaCl, 0.02% sodium azide and 50% glycerol.
Storage	Store at -20°C for long term preservation (recommended). Store at 4°C for short term use.

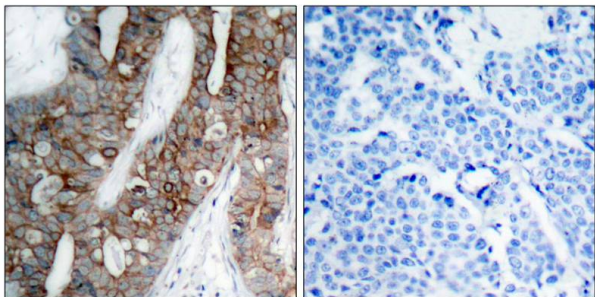
## Application Details

Predicted MW: 110kd  
Western blotting: 1:500~1:1000  
Immunohistochemistry: 1:50~1:100

## Images



Western blot analysis of extracts from HL60 and HT29 cells using Integrin b3(Ab-773) Antibody #21082.



Immunohistochemical analysis of paraffin-embedded human breast carcinoma tissue using Integrin b3(Ab-773) Antibody #21082(left) or the same antibody preincubated with blocking peptide(right).

## Background

Integrin  $\alpha$ -V/ $\beta$ -3 is a receptor for cytotactin, fibronectin, laminin, matrix metalloproteinase-2, osteopontin, osteomodulin, prothrombin, thrombospondin, vitronectin and von Willebrand factor. Integrin  $\alpha$ -IIb/ $\beta$ -3 is a receptor for fibronectin, fibrinogen, plasminogen, prothrombin, thrombospondin and vitronectin. Integrins  $\alpha$ -IIb/ $\beta$ -3 and  $\alpha$ -V/ $\beta$ -3 recognize the sequence R-G-D in a wide array of ligands. Integrin  $\alpha$ -IIb/ $\beta$ -3 recognizes the sequence H-H-L-G-G-A-K-Q-A-G-D-V in fibrinogen gamma chain. Following activation integrin  $\alpha$ -IIb/ $\beta$ -3 brings about platelet/platelet interaction through binding of soluble fibrinogen. This step leads to rapid platelet aggregation which physically plugs ruptured endothelial surface. In case of HIV-1 infection, the interaction with extracellular viral Tat protein seems to enhance angiogenesis in Kaposi's sarcoma lesions.

Chandhoke SK, et al.

Note: This product is for in vitro research use only