

S-Tag Mouse Monoclonal Antibody

Catalog No: #T611

Orders: order@signalwayantibody.com

Support: tech@signalwayantibody.com

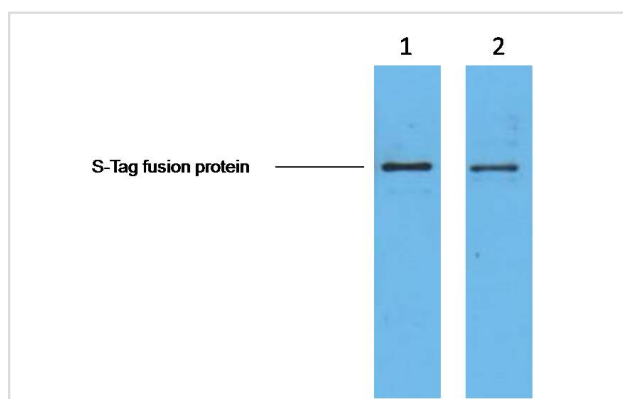
Description

Product Name	S-Tag Mouse Monoclonal Antibody
Host Species	Mouse
Clonality	Monoclonal
Isotype	IgG1
Purification	Affinity-chromatography
Applications	WB
Specificity	S- Tag antibody can recognize C-terminal, internal, and N-terminal S-tagged proteins.
Immunogen Type	Peptide-KLH
Immunogen Description	A synthetic peptide KETAAAKFERQHMDs coupled to KLH.
Target Name	S-Tag
SDS-PAGE MW	N/A
Concentration	1.0mg/ml
Formulation	Liquid in PBS containing 50% glycerol, 0.5% BSA and 0.02% sodium azide.
Storage	Store at -20 °C.Stable for 12 months from date of receipt

Application Details

WB: 1:3000~1:10000

Images



2ug S-Tag fusion protein+ Primary antibody dilution at
 1γ • 1:5,000 2γ • 1:10,000

Background

S-tag is the name of an oligopeptide derived from pancreatic ribonuclease A (RNase A). If RNase A is digested with subtilisin, a single peptide bond is cleaved, but the resulting two products remain weakly bound to each other and the protein, called ribonuclease S, remains active although each of the two products alone shows no enzymatic activity. The N-terminus of the original RNase A, also called S-peptide, consists of 20 amino acid residues, of which only the first 15 are required for ribonuclease activity. This 15 amino acids long peptide is called S15 or S-tag. The amino acid sequence of the S-tag is: KETAAAKFERQHMDs conjugated to KLH. S- Tag antibody can recognize C-terminal, internal, and N-terminal S-tagged proteins.

Note: This product is for in vitro research use only