

## IRS-1(Phospho-Ser307) Antibody

Catalog No: #11235

Package Size: #11235-1 50ul #11235-2 100ul

Orders: [order@signalwayantibody.com](mailto:order@signalwayantibody.com)Support: [tech@signalwayantibody.com](mailto:tech@signalwayantibody.com)

## Description

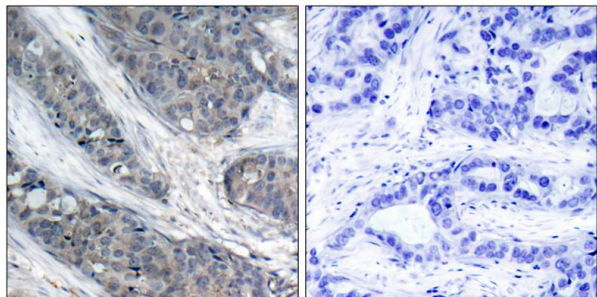
Product Name	IRS-1(Phospho-Ser307) Antibody
Host Species	Rabbit
Clonality	Polyclonal
Purification	Antibodies were produced by immunizing rabbits with synthetic phosphopeptide and KLH conjugates. Antibodies were purified by affinity-chromatography using epitope-specific phosphopeptide. Non-phospho specific antibodies were removed by chromatography using non-phosphopeptide.
Applications	IHC
Species Reactivity	Hu Ms Rt
Specificity	The antibody detects endogenous level of IRS-1 only when phosphorylated at serine 307.
Immunogen Type	Peptide-KLH
Immunogen Description	Peptide sequence around phosphorylation site of serine 307(T-E-S(p)-I-T) derived from Human IRS-1.
Target Name	IRS-1
Modification	Phospho
Other Names	HIRS-1
Accession No.	Swiss-Prot: P35568 ; NCBI Gene ID: 3667; NCBI mRNA: NM_005544.2 ; NCBI Protein: NP_005535.1
Uniprot	P35568
GeneID	3667;
SDS-PAGE MW	180KD
Concentration	1.0mg/ml
Formulation	Supplied at 1.0mg/mL in phosphate buffered saline (without Mg <sup>2+</sup> and Ca <sup>2+</sup> ), pH 7.4, 150mM NaCl, 0.02% sodium azide and 50% glycerol.
Storage	Store at -20°C

## Application Details

Predicted MW: 180kd

Immunohistochemistry: 1:50~1:100

## Images



Immunohistochemical analysis of paraffin-embedded human breast carcinoma tissue, using IRS-1 (phospho-Ser307) antibody (#11235).

## Background

May mediate the control of various cellular processes by insulin. When phosphorylated by the insulin receptor binds specifically to various cellular proteins containing SH2 domains such as phosphatidylinositol 3-kinase p85 subunit or GRB2. Activates phosphatidylinositol 3-kinase when bound to the regulatory p85 subunit

Note: This product is for in vitro research use only