

## CNTFR Antibody

Catalog No: #31061

Package Size: #31061-1 50ul #31061-2 100ul

Orders: [order@signalwayantibody.com](mailto:order@signalwayantibody.com)Support: [tech@signalwayantibody.com](mailto:tech@signalwayantibody.com)

## Description

Product Name	CNTFR Antibody
Host Species	Rabbit
Clonality	Polyclonal
Applications	ELISA WB
Species Reactivity	Hu Ms
Specificity	The antibody detects endogenous level of total CNTFR protein.
Immunogen Type	Recombinant Protein
Immunogen Description	Fusion protein corresponding to a region derived from 23-342 amino acids of human ciliary neurotrophic factor receptor
Target Name	CNTFR
Other Names	ciliary neurotrophic factor receptor
Accession No.	Swiss-Prot:P26992Gene ID:1271;
Uniprot	P26992
GeneID	1271;
Concentration	0.3mg/ml
Formulation	Rabbit IgG in pH7.4 PBS, 0.05% NaN <sub>3</sub> , 40% Glycerol.
Storage	Store at -20°C/1 year

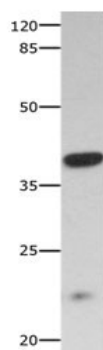
## Application Details

Predicted MW: 41kd

ELISA: 1:1000-1:5000

Western blotting: 1:500-1:2000

## Images



Gel: 10%SDS-PAGE

Lysate: 40 µg Mouse skeletal muscle tissue lysate

Primary antibody: 1/300 dilution

Secondary antibody: Goat anti Rabbit IgG - H&amp;L (HRP) at 1/10000 dilution

Exposure time: 60 seconds

## Background

---

This gene encodes a member of the type 1 cytokine receptor family. The encoded protein is the ligand-specific component of a tripartite receptor for ciliary neurotrophic factor, which plays a critical role in neuronal cell survival, differentiation and gene expression. Binding of ciliary neurotrophic factor to the encoded protein recruits the transmembrane components of the receptor, gp130 and leukemia inhibitory factor receptor, facilitating signal transduction. Single nucleotide polymorphisms in this gene may be associated with variations in muscle strength, as well as early onset of eating disorders. Alternatively spliced transcript variants have been observed for this gene.

---

Note: This product is for in vitro research use only