

## CYP1A1 Antibody

Catalog No: #31065

Package Size: #31065-1 50ul #31065-2 100ul

Orders: [order@signalwayantibody.com](mailto:order@signalwayantibody.com)Support: [tech@signalwayantibody.com](mailto:tech@signalwayantibody.com)

## Description

Product Name	CYP1A1 Antibody
Host Species	Rabbit
Clonality	Polyclonal
Applications	ELISA WB IHC
Species Reactivity	Hu Ms
Specificity	The antibody detects endogenous level of total CYP1A1 protein.
Immunogen Type	Recombinant Protein
Immunogen Description	Fusion protein corresponding to C terminal 300 amino acids of human cytochrome P450, family 1, subfamily A, polypeptide 1
Target Name	CYP1A1
Other Names	cytochrome P450, family 1, subfamily A, polypeptide 1, AHH, AHRR, CP11, CYP1, P1-450, P450-C, P450DX
Accession No.	Swiss-Prot:P04798Gene ID:1543;
Uniprot	P04798
GeneID	1543;
Formulation	Rabbit IgG in pH7.4 PBS, 0.05% NaN <sub>3</sub> , 40% Glycerol.
Storage	Store at -20°C/1 year

## Application Details

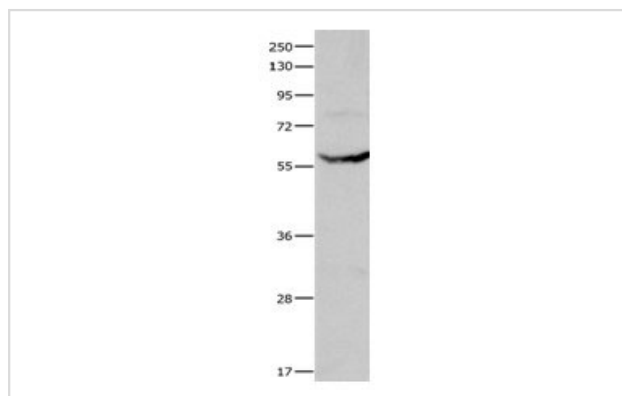
Predicted MW: 58kd

ELISA: 1:1000-1:5000

Western blotting: 1:500-1:2000

Immunohistochemistry: 1:25-1:100

## Images



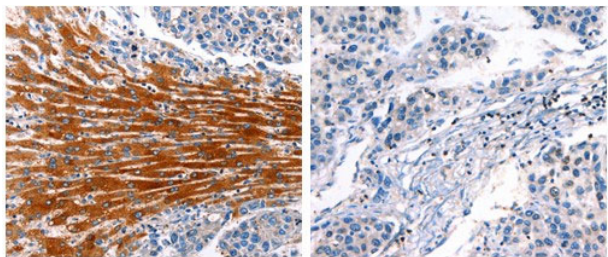
Gel: 10%SDS-PAGE

Lysate: 30 µg Mouse liver tissue lysate

Primary antibody: 1/400 dilution

Secondary antibody: Goat anti Rabbit IgG - H&amp;L (HRP) at 1/10000 dilution

Exposure time: 5 seconds



The image on the left is immunohistochemistry of paraffin-embedded Human liver cancer tissue using 31065(CYP1A1 Antibody) at dilution 1/25, on the right is treated with the fusion protein.

## Background

This gene, CYP1A1, encodes a member of the cytochrome P450 superfamily of enzymes. The cytochrome P450 proteins are monooxygenases which catalyze many reactions involved in drug metabolism and synthesis of cholesterol, steroids and other lipids. This protein localizes to the endoplasmic reticulum and its expression is induced by some polycyclic aromatic hydrocarbons (PAHs), some of which are found in cigarette smoke. The enzyme's endogenous substrate is unknown; however, it is able to metabolize some PAHs to carcinogenic intermediates. The gene has been associated with lung cancer risk. A related family member, CYP1A2, is located approximately 25 kb away from CYP1A1 on chromosome 15.

Note: This product is for in vitro research use only