

## LGALS2 Antibody

Catalog No: #31075

Package Size: #31075-1 50ul #31075-2 100ul

Orders: [order@signalwayantibody.com](mailto:order@signalwayantibody.com)Support: [tech@signalwayantibody.com](mailto:tech@signalwayantibody.com)

## Description

Product Name	LGALS2 Antibody
Host Species	Rabbit
Clonality	Polyclonal
Applications	ELISA WB IHC
Species Reactivity	Hu Ms
Specificity	The antibody detects endogenous level of total LGALS2 protein.
Immunogen Type	Recombinant protein
Immunogen Description	Full length fusion protein
Target Name	LGALS2
Other Names	ectin, galactoside-binding, soluble, 2, HL14
Accession No.	Swiss-Prot:P05162Gene ID:3957;
Uniprot	P05162
GeneID	3957;
Formulation	Rabbit IgG in pH7.4 PBS, 0.05% NaN <sub>3</sub> , 40% Glycerol.
Storage	Store at -20°C/1 year

## Application Details

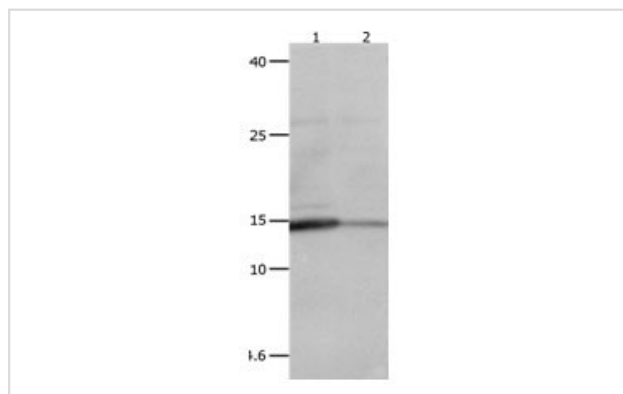
Predicted MW: 15kd

ELISA: 1:1000-1:5000

Western blotting: 1:200-1:1000

Immunohistochemistry: 1:10-1:50

## Images



Gel: 15%+12%SDS-PAGE

Lane1: Human liver Cancer tissue lysate

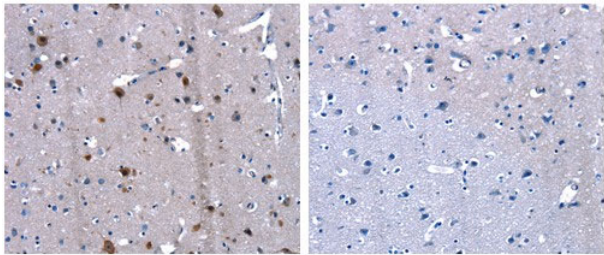
Lane2: Human leiomyosarcoma tissue lysate

Lysates: 40 ug per lane

Primary antibody: 1/250 dilution

Secondary antibody: Goat anti Rabbit IgG - H&amp;L (HRP) at 1/10000 dilution

Exposure time: 10 seconds



The image on the left is immunohistochemistry of paraffin-embedded Human brain cancer tissue using 31075 (LGALS2 Antibody) at dilution 1/13, on the right is treated with the fusion protein.

## Background

The protein encoded by this gene is a soluble beta-galactoside binding lectin. The encoded protein is found as a homodimer and can bind to lymphotoxin-alpha. A single nucleotide polymorphism in an intron of this gene can alter the transcriptional level of the protein, with a resultant increased risk of myocardial infarction. This protein binds beta-galactoside. Its physiological function is not yet known.

Note: This product is for in vitro research use only