

## SERPINB5 Antibody

Catalog No: #31098

Package Size: #31098-1 50ul #31098-2 100ul

Orders: [order@signalwayantibody.com](mailto:order@signalwayantibody.com)Support: [tech@signalwayantibody.com](mailto:tech@signalwayantibody.com)

## Description

Product Name	SERPINB5 Antibody
Host Species	Rabbit
Clonality	Polyclonal
Applications	ELISA WB IHC
Species Reactivity	Hu Ms
Specificity	The antibody detects endogenous level of total SERPINB5 protein.
Immunogen Type	Recombinant protein
Immunogen Description	Full length fusion protein
Target Name	SERPINB5
Other Names	serpin peptidase inhibitor, clade B (ovalbumin), member 5, PI5, maspin
Accession No.	Swiss-Prot:P36952Gene ID:5268;
Uniprot	P36952
GeneID	5268;
Concentration	1.4mg/ml
Formulation	Rabbit IgG in pH7.4 PBS, 0.05% NaN <sub>3</sub> , 40% Glycerol.
Storage	Store at -20°C/1 year

## Application Details

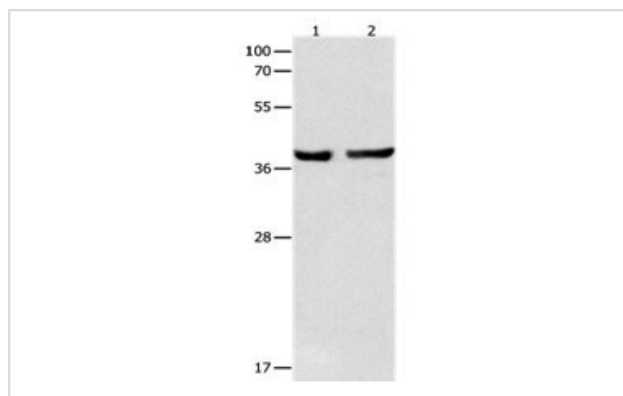
Predicted MW: 42kd

ELISA: 1:2000-1:10000

Western blotting: 1:1000-1:5000

Immunohistochemistry: 1:100-1:300

## Images



Gel: 12%SDS-PAGE

Lane1: Mouse esophagus tissue lysate

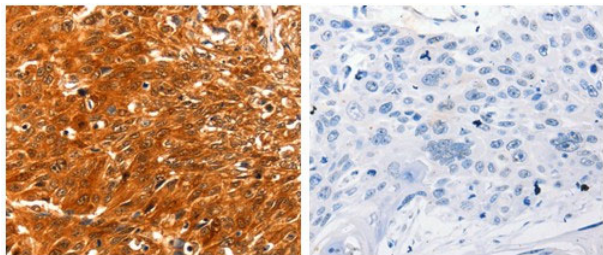
Lane2: Human cervical cancer tissue lysate

Lysates: 40 ug per lane

Primary antibody: 1/1000 dilution

Secondary antibody: Goat anti Rabbit IgG - H&amp;L (HRP) at 1/10000 dilution

Exposure time: 13 seconds



The image on the left is immunohistochemistry of paraffin-embedded Human esophagus cancer tissue using 31098 (SERPINB5 Antibody) at dilution 1/60, on the right is treated with the fusion protein.

## Background

Maspin (mammary serine protease inhibitor) also known as serpin B5 is a protein that in humans is encoded by the SERPINB5 gene.[1] This protein belongs to the serpin (serine protease inhibitor) superfamily.[1] SERPINB5 also functions as a tumor suppressor gene in epithelial cells. The expressed protein suppresses the ability of cancer cells to invade and metastasize other tissues. The protein also functions as an angiogenesis inhibitor. It blocks the growth, invasion, and metastatic properties of mammary tumors. As it does not undergo the S (stressed) to R (relaxed) conformational transition characteristic of active serpins, it exhibits no serine protease inhibitory activity.

Note: This product is for in vitro research use only