

RELA Antibody

Catalog No: #31102



Package Size: #31102-1 50ul #31102-2 100ul

Orders: order@signalwayantibody.com
Support: tech@signalwayantibody.com

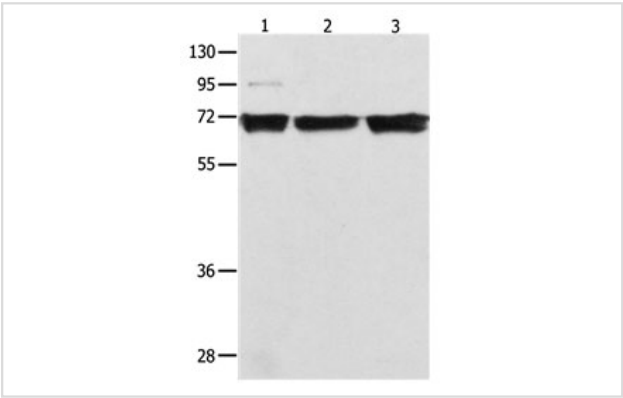
Description

Product Name	RELA Antibody
Host Species	Rabbit
Clonality	Polyclonal
Applications	ELISA WB
Species Reactivity	Hu
Specificity	The antibody detects endogenous level of total RELA protein.
Immunogen Type	Recombinant protein
Immunogen Description	Full length fusion protein
Target Name	RELA
Other Names	v-rel reticuloendotheliosis viral oncogene homolog A (avian), p65, NFkB3
Accession No.	Swiss-Prot:Q04206Gene ID:5970;
Uniprot	Q04206
GeneID	5970;
Formulation	Rabbit IgG in pH7.4 PBS, 0.05% NaN3, 40% Glycerol.
Storage	Store at -20°C/1 year

Application Details

Predicted MW: 25kd
ELISA: 1:2000-1:5000
Western blotting: 1:500-1:2000

Images



Gel: 10%SDS-PAGE
Lane1: 293T cell lysate
Lane2: K562 cell lysate
Lane3: Jurkat cell lysate
Lysates: 40 ug per lane
Primary antibody: 1/500 dilution
Secondary antibody: Goat anti Rabbit IgG - H&L (HRP) at 1/10000 dilution
Exposure time: 5 seconds

Background

NF-kappa-B is a ubiquitous transcription factor involved in several biological processes. It is held in the cytoplasm in an inactive state by specific inhibitors. Upon degradation of the inhibitor, NF-kappa-B moves to the nucleus and activates transcription of specific genes. NF-kappa-B is composed

of NFKB1 or NFKB2 bound to either REL, RELA, or RELB. The most abundant form of NF-kappa-B is NFKB1 complexed with the product of this gene, RELA. Four transcript variants encoding different isoforms have been found for this gene.

Note: This product is for in vitro research use only