

## NME3 Antibody

Catalog No: #31104

Package Size: #31104-1 50ul #31104-2 100ul

Orders: [order@signalwayantibody.com](mailto:order@signalwayantibody.com)Support: [tech@signalwayantibody.com](mailto:tech@signalwayantibody.com)

## Description

Product Name	NME3 Antibody
Host Species	Rabbit
Clonality	Polyclonal
Applications	ELISA WB
Species Reactivity	Hu Ms
Specificity	The antibody detects endogenous level of total NME3 protein.
Immunogen Type	Recombinant Protein
Immunogen Description	Full length fusion protein
Target Name	NME3
Other Names	NME/NM23 nucleoside diphosphate kinase 3, NDPKC, NDPK-C, NM23H3, DR-nm23, NM23-H3, c371H6.2
Accession No.	Swiss-Prot:Q13232Gene ID:4832;
Uniprot	Q13232
GeneID	4832;
Formulation	Rabbit IgG in pH7.4 PBS, 0.05% NaN <sub>3</sub> , 40% Glycerol.
Storage	Store at -20°C/1 year

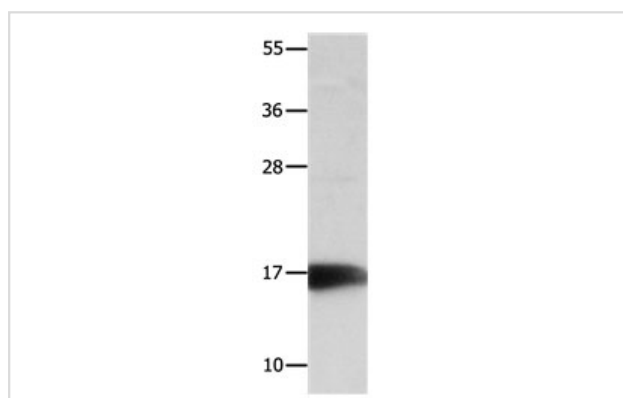
## Application Details

Predicted MW: 19kd

ELISA: 1:1000-1:5000

Western blotting: 1:1000-1:5000

## Images



Gel: 12%SDS-PAGE

Lysate: 40 µg Mouse kidney tissue lysate

Primary antibody: 1/800 dilution

Secondary antibody: Goat anti Rabbit IgG - H&amp;L (HRP) at 1/10000 dilution

Exposure time: 1 minute

## Background

Nucleoside diphosphate kinase 3 is an enzyme that in humans is encoded by the NME3 gene. Major role in the synthesis of nucleoside triphosphates other than ATP. The ATP gamma phosphate is transferred to the NDP beta phosphate via a ping-pong mechanism, using a phosphorylated active-site

intermediate. Probably has a role in normal hematopoiesis by inhibition of granulocyte differentiation and induction of apoptosis.

---

Note: This product is for in vitro research use only