

## PC Antibody

Catalog No: #31111

Package Size: #31111-1 50ul #31111-2 100ul

Orders: [order@signalwayantibody.com](mailto:order@signalwayantibody.com)Support: [tech@signalwayantibody.com](mailto:tech@signalwayantibody.com)

## Description

Product Name	PC Antibody
Host Species	Rabbit
Clonality	Polyclonal
Applications	ELISA WB
Species Reactivity	Hu
Specificity	The antibody detects endogenous level of total PC protein.
Immunogen Type	Recombinant Protein
Immunogen Description	Fusion protein corresponding to a region derived from 563-832 amino acids of human pyruvate carboxylase
Target Name	PC
Other Names	Pyruvate carboxylase, PCB
Accession No.	Swiss-Prot:P11498Gene ID:5091;
Uniprot	P11498
GeneID	5091;
Formulation	Rabbit IgG in pH7.4 PBS, 0.05% NaN <sub>3</sub> , 40% Glycerol.
Storage	Store at -20°C/1 year

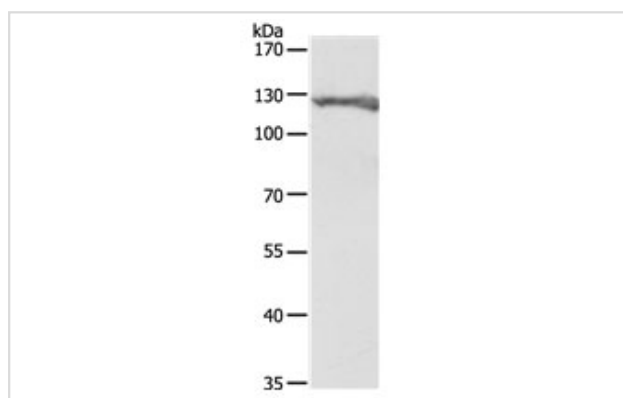
## Application Details

Predicted MW: 130kd

ELISA: 1:1000-1:2000

Western blotting: 1:200-1:1000

## Images



Gel: 8%SDS-PAGE

Lysate: 40 µg Hela cell lysate

Primary antibody: 1/200 dilution

Secondary antibody: Goat anti Rabbit IgG - H&amp;L (HRP) at 1/10000 dilution

Exposure time: 30 seconds

## Background

This gene encodes pyruvate carboxylase, which requires biotin and ATP to catalyse the carboxylation of pyruvate to oxaloacetate. The active enzyme is a homotetramer arranged in a tetrahedron which is located exclusively in the mitochondrial matrix. Pyruvate carboxylase is involved in

gluconeogenesis, lipogenesis, insulin secretion and synthesis of the neurotransmitter glutamate. Mutations in this gene have been associated with pyruvate carboxylase deficiency. Alternatively spliced transcript variants with different 5' UTRs, but encoding the same protein, have been found for this gene.

---

Note: This product is for in vitro research use only