

## SPATA13 Antibody

Catalog No: #31130

Package Size: #31130-1 50ul #31130-2 100ul

Orders: [order@signalwayantibody.com](mailto:order@signalwayantibody.com)Support: [tech@signalwayantibody.com](mailto:tech@signalwayantibody.com)

## Description

Product Name	SPATA13 Antibody
Host Species	Rabbit
Clonality	Polyclonal
Applications	ELISA WB
Species Reactivity	Hu
Specificity	The antibody detects endogenous level of total SPATA13 protein.
Immunogen Type	Recombinant Protein
Immunogen Description	Fusion protein corresponding to a region derived from 240-424 amino acids of human spermatogenesis associated 13
Target Name	SPATA13
Other Names	Spermatogenesis associated 13, ASEF2; ARHGEF29; RP11-307N16.3
Accession No.	Swiss-Prot:Q96N96Gene ID:221178;
Uniprot	Q96N96
GeneID	221178;
Concentration	0.1mg/ml
Formulation	Rabbit IgG in pH7.4 PBS, 0.05% NaN <sub>3</sub> , 40% Glycerol.
Storage	Store at -20°C/1 year

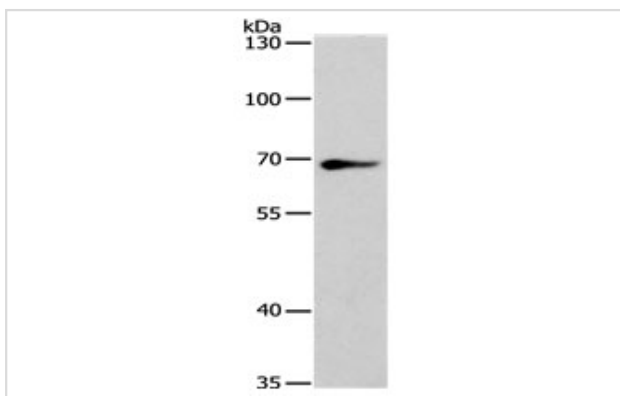
## Application Details

Predicted MW: 75kd

ELISA: 1:1000-1:2000

Western blotting: 1:200-1:1000

## Images



Gel: 8%SDS-PAGE

Lysate: 40 µg Hela cell lysate

Primary antibody: 1/200 dilution

Secondary antibody: Goat anti Rabbit IgG - H&amp;L (HRP) at 1/10000 dilution

Exposure time: 5 seconds

## Background

---

Acts as guanine nucleotide exchange factor (GEF) for RHOA, RAC1 and CDC42 GTPases. Regulates cell migration and adhesion assembly and disassembly through a RAC1, PI3K, RHOA and AKT1-dependent mechanism. Increases both RAC1 and CDC42 activity, but decreases the amount of active RHOA. Required for MMP9 up-regulation via the JNK signaling pathway in colorectal tumor cells. Involved in tumor angiogenesis and may play a role in intestinal adenoma formation and tumor progression. Both the ABR and the SH3 domains contribute to maintaining the protein in an inhibited conformation by associating with the C-terminal tail. Binding of these domains to the C-terminal tail inhibits the activity of the protein by blocking a region that is required for its GEF activity.

---

Note: This product is for in vitro research use only