

PKD/PKC $\mu$ (Ab-910) Antibody

Catalog No: #21128

Package Size: #21128-1 50ul #21128-2 100ul

Orders: [order@signalwayantibody.com](mailto:order@signalwayantibody.com)Support: [tech@signalwayantibody.com](mailto:tech@signalwayantibody.com)

## Description

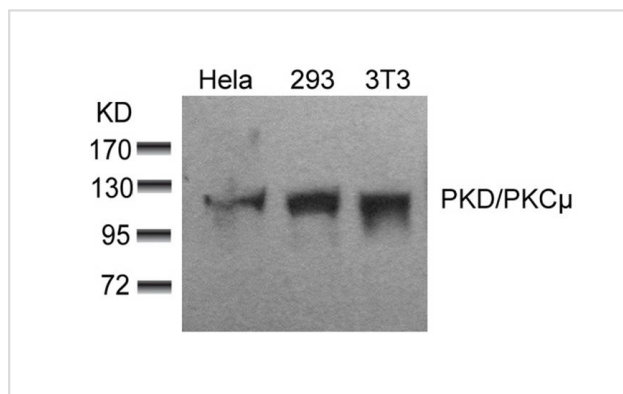
Product Name	PKD/PKC $\mu$ (Ab-910) Antibody
Host Species	Rabbit
Clonality	Polyclonal
Purification	Antibodies were produced by immunizing rabbits with synthetic peptide and KLH conjugates. Antibodies were purified by affinity-chromatography using epitope-specific peptide.
Applications	WB
Species Reactivity	Hu Ms
Specificity	The antibody detects endogenous level of total PKD/PKC $\mu$ protein.
Immunogen Type	Peptide-KLH
Immunogen Description	Peptide sequence around aa. 908~912 (R-V-S-I-L) derived from Human PKD/PKC $\mu$ .
Target Name	PKD/PKC $\mu$
Other Names	nPKC-D1; Protein kinase D; Protein kinase C $\mu$ type; nPKC- $\mu$ ;
Accession No.	Swiss-Prot: Q15139NCBI Protein: NP_002733.2
Uniprot	Q15139
GeneID	5587;
Concentration	1.0mg/ml
Formulation	Supplied at 1.0mg/mL in phosphate buffered saline (without Mg <sup>2+</sup> and Ca <sup>2+</sup> ), pH 7.4, 150mM NaCl, 0.02% sodium azide and 50% glycerol.
Storage	Store at -20°C for long term preservation (recommended). Store at 4°C for short term use.

## Application Details

Predicted MW: 115kd

Western blotting: 1:500~1:1000

## Images



Western blot analysis of extracts from HeLa, 293 and 3T3 cells using PKD/PKC $\mu$ (Ab-910) Antibody #21128.

## Background

---

Converts transient diacylglycerol (DAG) signals into prolonged physiological effects, downstream of PKC. Involved in resistance to oxidative stress through activation of NF-kappa-B.

Matthews SA, et al. J Biol Chem 1999 Sep; 274(37): 26543-26549

Brandlin I, et al. J Biol Chem 2002 Feb; 277(8): 6490-6496

Storz P, et al. Mol Pharmacol 2004 Oct; 66(4): 870-879

---

Note: This product is for in vitro research use only