

AQP10 Antibody

Catalog No: #31177

Package Size: #31177-1 50ul #31177-2 100ul

Orders: order@signalwayantibody.com

Support: tech@signalwayantibody.com

Description

Product Name	AQP10 Antibody
Host Species	Rabbit
Clonality	Polyclonal
Applications	ELISA WB
Species Reactivity	Hu
Specificity	The antibody detects endogenous level of total AQP10 protein.
Immunogen Type	Peptide-KLH
Immunogen Description	Synthetic peptide corresponding to a region derived from 276-290 amino acids of Human aquaporin 10
Target Name	AQP10
Other Names	aquaporin 10, AQPA_HUMAN
Accession No.	Swiss_Prot:Q96PS8Gene_ID:89872
Uniprot	Q96PS8
GeneID	89872
Formulation	Rabbit IgG in pH7.4 PBS, 0.05% NaN ₃ , 40% Glycerol.
Storage	Store at -20°C/1 year

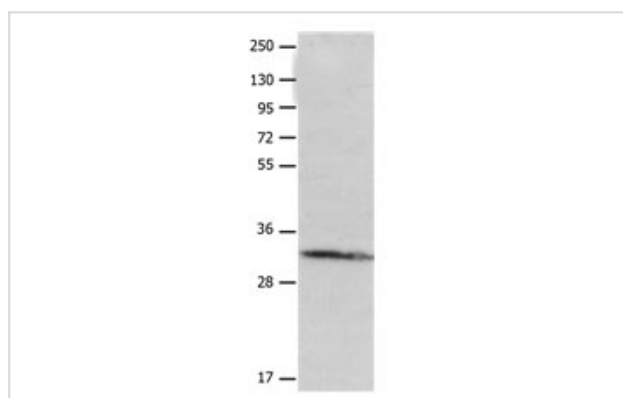
Application Details

Predicted MW: 32kd

ELISA: 1:500-1:5000

Western blotting: 1:500-1:2000

Images



Gel: 12%SDS-PAGE

Lysate: 50 µg Jurkat cell lysate

Primary antibody: 1/455 dilution

Secondary antibody: Donkey anti Rabbit IgG - H&L (HRP) at 1/5000 dilution

Exposure time: 1 minute

Background

This gene encodes a member of the aquaglyceroporin family of integral membrane proteins. Members of this family function as water-permeable channels in the epithelia of organs that absorb and excrete water. This protein was shown to function as a water-selective channel, and could also

permeate neutral solutes such as glycerol and urea.

Note: This product is for in vitro research use only