

## PTGER2 Antibody

Catalog No: #31194

Package Size: #31194-1 50ul #31194-2 100ul

Orders: [order@signalwayantibody.com](mailto:order@signalwayantibody.com)Support: [tech@signalwayantibody.com](mailto:tech@signalwayantibody.com)

## Description

Product Name	PTGER2 Antibody
Host Species	Rabbit
Clonality	Polyclonal
Applications	ELISA WB
Species Reactivity	Hu
Specificity	The antibody detects endogenous level of total PTGER2 protein.
Immunogen Type	Peptide-KLH
Immunogen Description	Synthetic peptide corresponding to a region derived from 1-13 amino acids of Human prostaglandin E receptor 2 (subtype EP2), 53kDa
Target Name	PTGER2
Other Names	prostaglandin E receptor 2 (subtype EP2), 53kDa, EP2
Accession No.	Swiss-Prot:P43116Gene ID:5732;
Uniprot	P43116
GeneID	5732;
Formulation	Rabbit IgG in pH7.4 PBS, 0.05% NaN <sub>3</sub> , 40% Glycerol.
Storage	Store at -20°C/1 year

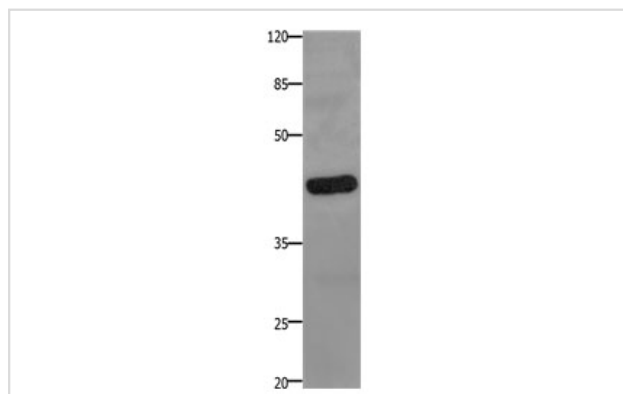
## Application Details

Predicted MW: 40kd

ELISA: 1:1000-1:5000

Western blotting: 1:500-1:2000

## Images



Gel: 10%SDS-PAGE

Lysate: 40 µg A549 cell lysate

Primary antibody: 1/100 dilution

Secondary antibody: Goat anti Rabbit IgG - H&amp;L (HRP) at 1/10000 dilution

Exposure time: 1 minute

## Background

This gene encodes a receptor for prostaglandin E<sub>2</sub>, a metabolite of arachidonic acid which has different biologic activities in a wide range of tissues.

Mutations in this gene are associated with aspirin-induced susceptibility to asthma. Prostaglandin E2 receptor (53kDa), also known as EP2, is a prostaglandin receptor for prostaglandin E2. It is encoded by the human gene PTGER2. Receptor for prostaglandin E2 (PGE2). The activity of this receptor is mediated by G(s) proteins that stimulate adenylate cyclase. The subsequent raise in intracellular cAMP is responsible for the relaxing effect of this receptor on smooth muscle.

---

Note: This product is for in vitro research use only