

FOXJ3 Antibody

Catalog No: #31197

Package Size: #31197-1 50ul #31197-2 100ul

Orders: order@signalwayantibody.com

Support: tech@signalwayantibody.com

Description

Product Name	FOXJ3 Antibody
Host Species	Rabbit
Clonality	Polyclonal
Applications	ELISA WB
Species Reactivity	Hu Ms Rt
Specificity	The antibody detects endogenous level of total FOXJ3 protein.
Immunogen Type	Peptide-KLH
Immunogen Description	Synthetic peptide corresponding to a region derived from 610-622 amino acids of Human forkhead box J1
Target Name	FOXJ3
Other Names	forkhead box J3
Accession No.	Swiss-Prot:Q9UPW0Gene ID:22887;
Uniprot	Q9UPW0
GeneID	22887;
Formulation	Rabbit IgG in pH7.4 PBS, 0.05% NaN ₃ , 40% Glycerol.
Storage	Store at -20°C/1 year

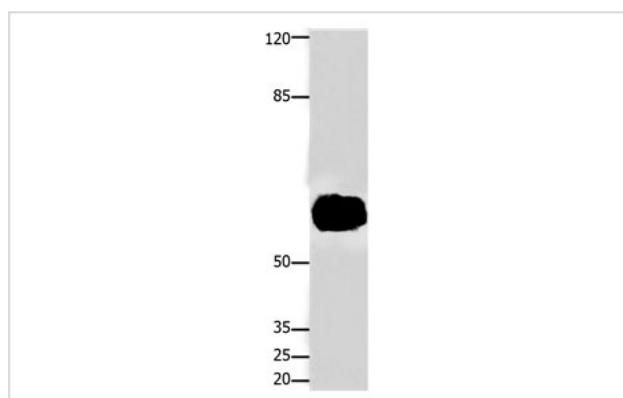
Application Details

Predicted MW: 69kd

ELISA: 1:1000-1:5000

Western blotting: 1:2000-1:5000

Images



Gel: 10%SDS-PAGE
Lysate: 40 µg Human liver cancer tissue lysate
Primary antibody: 1/250 dilution
Secondary antibody: Goat anti Rabbit IgG - H&L (HRP) at 1/10000 dilution
Exposure time: 5 minutes

Background

forkhead/winged helix transcription factor, Foxj3, which was expressed in embryonic and adult skeletal muscle. The 100-kb, 13-exon mouse Foxj3 gene on chromosome 4 encodes a 623 amino acid (aa) protein from an mRNA of at least 4.8 kb (Human FOXJ3: Chr 1, 627 aa, 5.3-kb mRNA). During

the stages of mouse development investigated Foxj3 is expressed in neuroectoderm, in neural crest, and in many structures derived from neural crest cells, such as facioacoustic, trigeminal, and dorsal root ganglia. Stripes of expression appear at E10.5 in the location of myotomes and expand ventrally in a pattern similar to the developing body wall musculature. Developing limbs have a complex pattern of Foxj3 expression that at E12.5 colocalizes with the condensed mesenchyme of the skeletal primordia.

Note: This product is for in vitro research use only