

BRAF Antibody

Catalog No: #31224

Package Size: #31224-1 50ul #31224-2 100ul

Orders: order@signalwayantibody.comSupport: tech@signalwayantibody.com

Description

Product Name	BRAF Antibody
Host Species	Rabbit
Clonality	Polyclonal
Applications	ELISA WB IHC
Species Reactivity	Hu Ms
Specificity	The antibody detects endogenous level of total BRAF protein.
Immunogen Type	Peptide
Immunogen Description	Synthetic peptide corresponding to a region derived from 591-607 amino acids of Human v-raf murine sarcoma viral oncogene homolog B1
Target Name	BRAF
Other Names	V-raf murine sarcoma viral oncogene homolog B1, NS7, BRAF1, RAFB1, B-RAF1
Formulation	Rabbit IgG in pH7.4 PBS, 0.05% NaN ₃ , 40% Glycerol.
Storage	Store at -20°C/1 year

Application Details

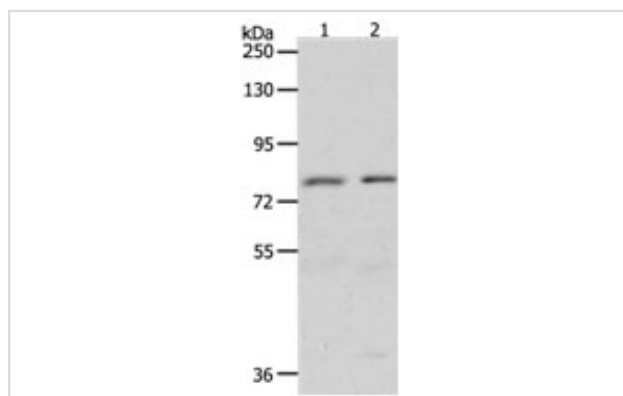
Predicted MW: 84kd

ELISA: 1:1000-1:5000

Western blotting: 1:500-1:2000

Immunohistochemistry: 1:50-1:200

Images



Gel: 8%SDS-PAGE

Lane1: Hela cell lysate

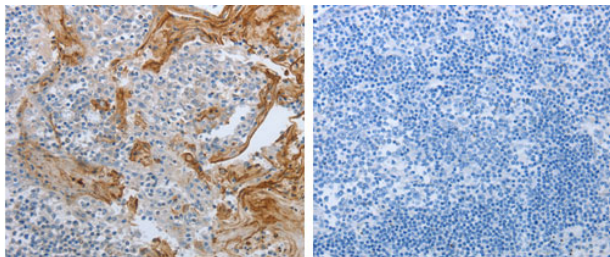
Lane2: HT-29 cell lysate

Lysates: 50 ug per lane

Primary antibody: 1/1400 dilution

Secondary antibody: Goat anti Rabbit IgG - H&L (HRP) at 1/10000 dilution

Exposure time: 5 minutes



The image on the left is immunohistochemistry of paraffin-embedded human tonsil tissue using 31224 (BRAF Antibody) at dilution 1/60, on the right is treated with the synthetic peptide.

Background

This gene encodes a protein belonging to the raf/mil family of serine/threonine protein kinases. This protein plays a role in regulating the MAP kinase/ERKs signaling pathway, which affects cell division, differentiation, and secretion. Mutations in this gene are associated with cardiofaciocutaneous syndrome, a disease characterized by heart defects, mental retardation and a distinctive facial appearance. Mutations in this gene have also been associated with various cancers, including non-Hodgkin lymphoma, colorectal cancer, malignant melanoma, thyroid carcinoma, non-small cell lung carcinoma, and adenocarcinoma of lung. A pseudogene, which is located on chromosome X, has been identified for this gene.

Note: This product is for in vitro research use only