

MMP17 Antibody

Catalog No: #31237

Package Size: #31237-1 50ul #31237-2 100ul

Orders: order@signalwayantibody.com

Support: tech@signalwayantibody.com

Description

Product Name	MMP17 Antibody
Host Species	Rabbit
Clonality	Polyclonal
Applications	ELISA WB
Species Reactivity	Hu
Specificity	The antibody detects endogenous level of total MMP17 protein.
Immunogen Type	Peptide
Immunogen Description	Synthetic peptide peptide corresponding to a region derived from 543-556 amino acids of human matrix metalloproteinase 17 (membrane-inserted)
Target Name	MMP17
Other Names	matrix metalloproteinase 17 (membrane-inserted), MT4-MMP
Accession No.	Swiss-Prot:Q9ULZ9Gene ID:4326;
Uniprot	Q9ULZ9
GeneID	4326;
Formulation	Rabbit IgG in pH7.4 PBS, 0.05% NaN ₃ , 40% Glycerol.
Storage	Store at -20°C/1 year

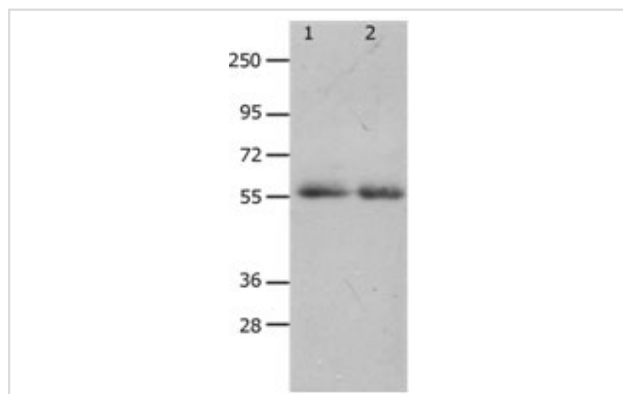
Application Details

Predicted MW: 58kd

ELISA: 1:2000-1:5000

Western blotting: 1:500-1:2000

Images



Gel:10+12 % SDS-PAGE

Lane1: K562 cell lysate

Lane2: Human colon cancer tissue lysate

Lysates: 40ug per lane

Primary antibody: 1/900 dilution

Secondary antibody: Goat anti Rabbit IgG - H&L (HRP) at 1/5000 dilution

Exposure time: 2 minutes

Background

Proteins of the matrix metalloproteinase (MMP) family are involved in the breakdown of extracellular matrix in normal physiological processes, such as

embryonic development, reproduction, and tissue remodeling, as well as in disease processes, such as arthritis and metastasis. Most MMP's are secreted as inactive proproteins which are activated when cleaved by extracellular proteinases. The protein encoded by this gene is considered a member of the membrane-type MMP (MT-MMP) subfamily. However, this protein is unique among the MT-MMP's in that it is a GPI-anchored protein rather than a transmembrane protein. The protein activates MMP-2 by cleavage.?

Note: This product is for in vitro research use only