

# NPHS1 Antibody

Catalog No: #31249



Package Size: #31249-1 50ul #31249-2 100ul

Orders: [order@signalwayantibody.com](mailto:order@signalwayantibody.com)  
Support: [tech@signalwayantibody.com](mailto:tech@signalwayantibody.com)

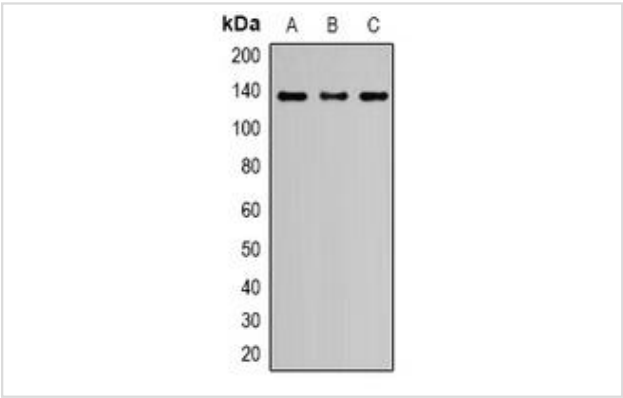
## Description

Product Name	NPHS1 Antibody
Host Species	Rabbit
Clonality	Polyclonal
Purification	The antibody was purified by immunogen affinity chromatography.
Applications	WB;IHC;ICC/IF
Species Reactivity	Hu Ms
Specificity	The antibody detects endogenous level of total NPHS1 protein.
Immunogen Type	Peptide
Immunogen Description	KLH-conjugated synthetic peptide of human Nephrin.
Target Name	NPHS1
Other Names	nephrosis 1, congenital, Finnish type (nephrin), CNF, NPHN, nephrin
Accession No.	Swiss-Prot:O60500Gene ID:4868;
Uniprot	O60500
GeneID	4868;
Concentration	1 mg/ml
Formulation	Liquid in 0.42% Potassium phosphate, 0.87% Sodium chloride, pH 7.3, 30% glycerol, and 0.01% sodium azide.
Storage	Shipped at 4°C. Upon delivery aliquot and store at -20°C for one year. Avoid freeze/thaw cycles.

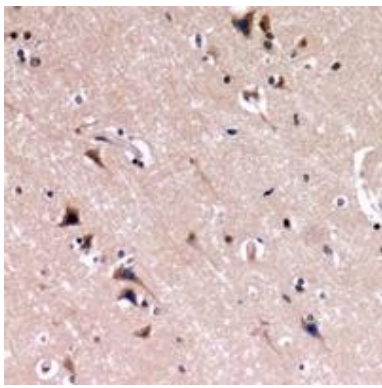
## Application Details

WB 1:500-1:1000;  
IHC 1:50-1:100;  
ICC/IF 1:50-1:200;

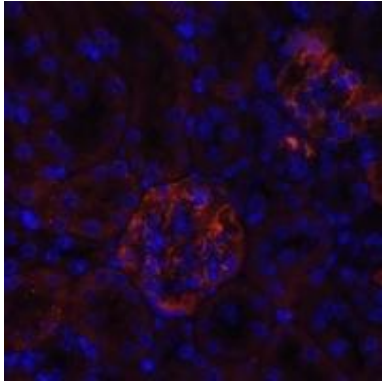
## Images



Western blot analysis of Nephrin expression in HeLa (A), HEK293T (B), PC12 (C) whole cell lysates. (Predicted band size:130; 134 kDa; Observed band size: 130 kDa)



Immunohistochemical analysis of Nephtrin staining in human brain formalin fixed paraffin embedded tissue section. The section was pre-treated using heat mediated antigen retrieval with sodium citrate buffer (pH 6.0). The section was then incubated with the antibody at room temperature and detected using an HRP conjugated compact polymer system. DAB was used as the chromogen. The section was then counterstained with haematoxylin and mounted with DPX.



Immunofluorescent analysis of Nephtrin staining in mouse kidney. Formalin-fixed cells were permeabilized with 0.1% Triton X-100 in TBS for 5-10 minutes and blocked with 3% BSA-PBS for 30 minutes at room temperature. Cells were probed with the primary antibody in 3% BSA-PBS and incubated overnight at 4 °C in a humidified chamber. Cells were washed with PBST and incubated with a AF594-conjugated secondary antibody (red) in PBS at room temperature in the dark. DAPI was used to stain the cell nuclei (blue).

## Background

This gene encodes a member of the immunoglobulin family of cell adhesion molecules that functions in the glomerular filtration barrier in the kidney. The gene is primarily expressed in renal tissues, and the protein is a type-1 transmembrane protein found at the slit diaphragm of glomerular podocytes. The slit diaphragm is thought to function as an ultrafilter to exclude albumin and other plasma macromolecules in the formation of urine. Mutations in this gene result in Finnish-type congenital nephrosis 1, characterized by severe proteinuria and loss of the slit diaphragm and foot processes. In Western blots, nephrin antibodies generated against the two terminal extracellular Ig domains of recombinant human nephrin recognized a 180-kDa protein in lysates of human glomeruli and a 150-kDa protein in transfected COS-7 cell lysates.

Note: This product is for in vitro research use only