

S100A4 Antibody

Catalog No: #31289

Package Size: #31289-1 50ul #31289-2 100ul

Orders: order@signalwayantibody.comSupport: tech@signalwayantibody.com

Description

Product Name	S100A4 Antibody
Host Species	Rabbit
Clonality	Polyclonal
Applications	ELISA WB IHC
Species Reactivity	Hu
Specificity	The antibody detects endogenous level of total S100A4 protein.
Immunogen Type	Peptide-KLH
Immunogen Description	Synthetic peptide corresponding to a region derived from 3-15 amino acids of human S100 calcium binding protein A4
Target Name	S100A4
Other Names	S100 calcium binding protein A4, 42A, 18A2, CAPL, FSP1, MTS1, P9KA, PEL98
Accession No.	Swiss-Prot:P26447Gene ID:6275;
Uniprot	P26447
GeneID	6275;
Formulation	Rabbit IgG in pH7.4 PBS, 0.05% NaN ₃ , 40% Glycerol.
Storage	Store at -20°C/1 year

Application Details

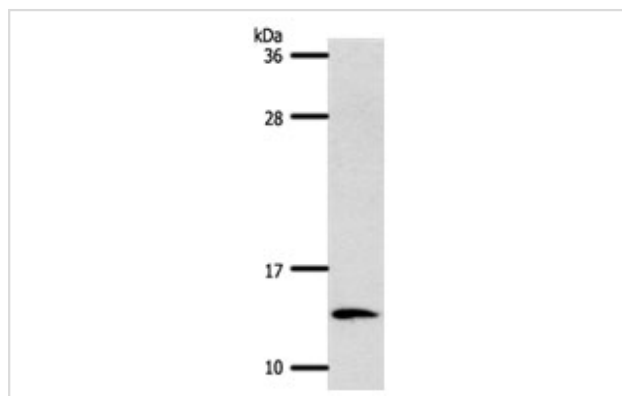
Predicted MW: 12kd

ELISA: 1:1000-1:5000

Western blotting: 1:200-1:1000

Immunohistochemistry: 1:50-1:200

Images



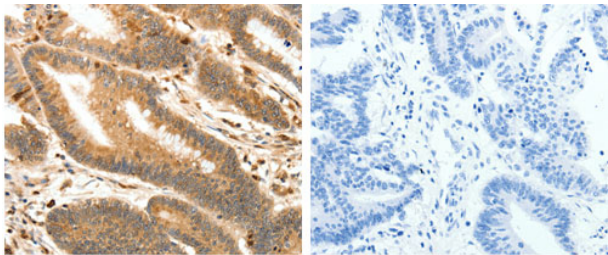
Gel: 12%SDS-PAGE

Lysate: 40 µg Hela cell lysate

Primary antibody: 1/500 dilution

Secondary antibody: Goat anti Rabbit IgG - H&L (HRP) at 1/10000 dilution

Exposure time: 40 seconds



The image on the left is immunohistochemistry of paraffin-embedded human colon cancer tissue using 31289 (S100A4 Antibody) at dilution 1/30, on the right is treated with the synthetic peptide.

Background

The protein encoded by this gene is a member of the S100 family of proteins containing 2 EF-hand calcium-binding motifs. S100 proteins are localized in the cytoplasm and/or nucleus of a wide range of cells, and involved in the regulation of a number of cellular processes such as cell cycle progression and differentiation. S100 genes include at least 13 members which are located as a cluster on chromosome 1q21. This protein may function in motility, invasion, and tubulin polymerization. Chromosomal rearrangements and altered expression of this gene have been implicated in tumor metastasis. Multiple alternatively spliced variants, encoding the same protein, have been identified.

Note: This product is for in vitro research use only