

SCTR Antibody

Catalog No: #31290

Package Size: #31290-1 50ul #31290-2 100ul

Orders: order@signalwayantibody.comSupport: tech@signalwayantibody.com

Description

Product Name	SCTR Antibody
Host Species	Rabbit
Clonality	Polyclonal
Applications	ELISA WB IHC
Species Reactivity	Hu
Specificity	The antibody detects endogenous level of total SCTR protein.
Immunogen Type	Peptide-KLH
Immunogen Description	Synthetic peptide corresponding to a region derived from 120-134 amino acids of human secretin receptor
Target Name	SCTR
Other Names	secretin receptor, SR
Accession No.	Swiss-Prot:P47872Gene ID:6344;
Uniprot	P47872
GeneID	6344;
Formulation	Rabbit IgG in pH7.4 PBS, 0.05% NaN ₃ , 40% Glycerol.
Storage	Store at -20°C/1 year

Application Details

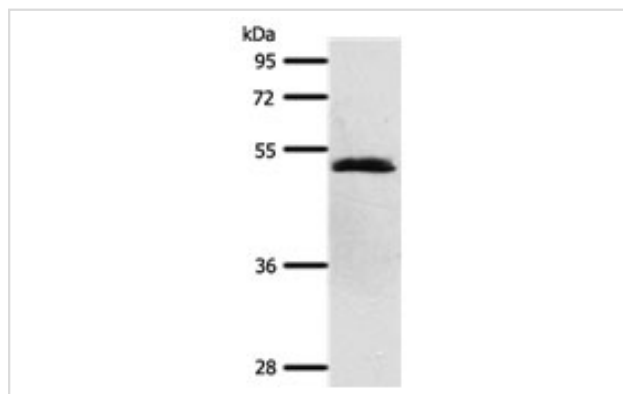
Predicted MW: 50kd

ELISA: 1:2000-1:10000

Western blotting: 1:1000-1:5000

Immunohistochemistry: 1:50-1:200

Images



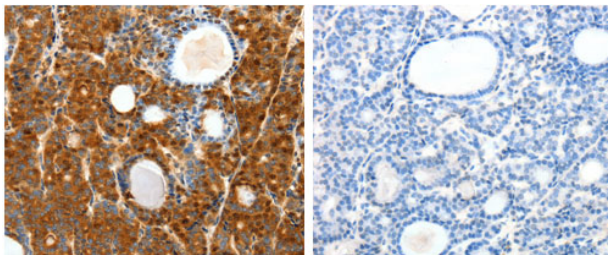
Gel: 10%SDS-PAGE

Lysate: 40 µg Human liver cancer tissue lysate

Primary antibody: 1/600 dilution

Secondary antibody: Goat anti Rabbit IgG - H&L (HRP) at 1/10000 dilution

Exposure time: 20 seconds



The image on the left is immunohistochemistry of paraffin-embedded human thyroid cancer tissue using 31290 (SCTR Antibody) at dilution 1/40, on the right is treated with the synthetic peptide.

Background

The protein encoded by this gene is a G protein-coupled receptor and belongs to the glucagon-VIP-secretin receptor family. It binds secretin which is the most potent regulator of pancreatic bicarbonate, electrolyte and volume secretion. Secretin and its receptor are suggested to be involved in pancreatic cancer and autism.

Note: This product is for in vitro research use only