

# PKC zeta Antibody

Catalog No: #29258

Orders: [order@signalwayantibody.com](mailto:order@signalwayantibody.com)Support: [tech@signalwayantibody.com](mailto:tech@signalwayantibody.com)

## Description

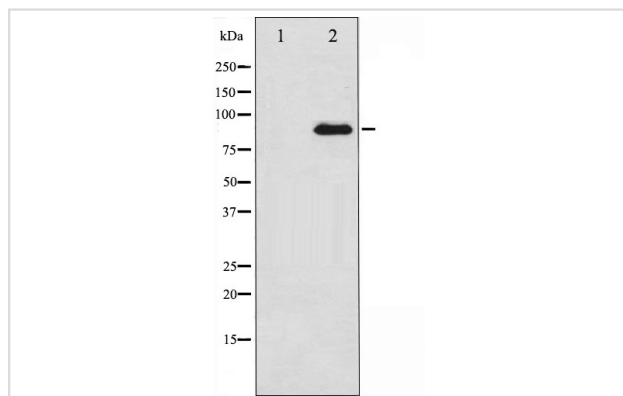
Product Name	PKC zeta Antibody
Host Species	Rabbit
Clonality	Polyclonal
Purification	Immunogen affinity purified
Applications	WB IHC
Species Reactivity	Hu Ms Rt
Specificity	PKC zeta Antibody detects endogenous levels of total PKC zeta
Immunogen Type	Peptide
Immunogen Description	A synthesized peptide derived from human PKC zeta
Target Name	PKC zeta
Other Names	EC 2.7.11.13, KPCZ, PKC-zeta, PKC2, PRKCZ, Protein kinase C zeta type, kinase PKC-zeta, nPKC-zeta
Accession No.	Swiss-Prot#: Q05513
Uniprot	Q05513
GeneID	5590;
SDS-PAGE MW	80KD
Concentration	1.0mg/ml
Formulation	Rabbit IgG in phosphate buffered saline , pH 7.4, 150mM NaCl, 0.02% sodium azide and 50% glycerol.
Storage	Store at -20°C/1 year

## Application Details

WB 1:500-1:2000

IHC 1:50-1:200

## Images



Western blot analysis of PKC zeta expression in PMA treated COS7 whole cell lysates, The lane on the left is treated with the antigen-specific peptide.

## Background

Protein kinase C (PKC) zeta is a member of the PKC family of serine/threonine kinases which are involved in a variety of cellular processes such as

proliferation, differentiation and secretion.

---

Note: This product is for in vitro research use only