

HIF1A Antibody

Catalog No: #29547



Orders: order@signalwayantibody.com
Support: tech@signalwayantibody.com

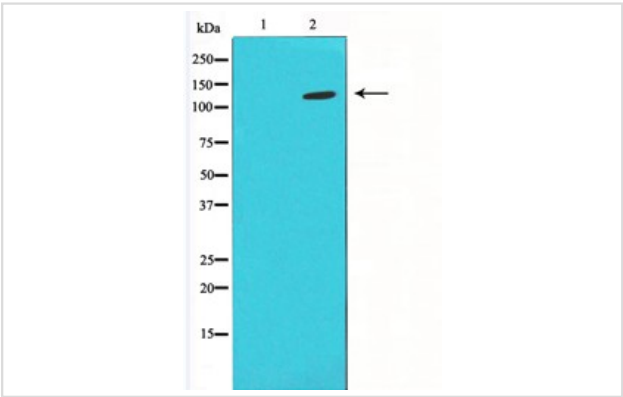
Description

Product Name	HIF1A Antibody
Host Species	Rabbit
Clonality	Polyclonal
Purification	Immunogen affinity purified
Applications	WB IHC
Species Reactivity	Hu Ms Rt
Specificity	HIF1a antibody detects endogenous levels of HIF1a.
Immunogen Type	Peptide
Immunogen Description	A synthesized peptide derived from human HIF1a.
Target Name	HIF1A
Other Names	HIF-1a,HIF1A
Accession No.	Swiss-Prot#: Q16665
Uniprot	Q16665
GeneID	3091;
SDS-PAGE MW	120KD
Concentration	1.0mg/ml
Formulation	Rabbit IgG in phosphate buffered saline , pH 7.4, 150mM NaCl, 0.02% sodium azide and 50% glycerol.
Storage	Store at -20°C/1 year

Application Details

WB: 1:500-1:3000
IHC: 1:50-1:200

Images



Western blot analysis on LOVO using HIF1a antibody ,The lane on the left is blocked with the antigen-specific peptide.

Background

Cell growth and viability is compromised by oxygen deprivation (hypoxia). Hypoxia-inducible factors, including HIF-1 α , Arnt 1 (also designated HIF-1 β),

EPAS-1 (also designated HIF-2 α) and HIF-3 α , induce glycolysis, erythropoiesis and angiogenesis in order to restore oxygen homeostasis. Hypoxia-inducible factors are members of the Per-Arnt-Sim (PAS) domain transcription factor family.

Note: This product is for in vitro research use only