

Fyn (Phospho-Tyr530) Antibody

Catalog No: #12008

Package Size: #12008-1 50ul #12008-2 100ul

Orders: order@signalwayantibody.comSupport: tech@signalwayantibody.com

Description

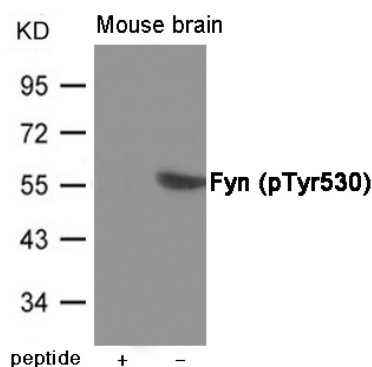
Product Name	Fyn (Phospho-Tyr530) Antibody
Host Species	Rabbit
Clonality	Polyclonal
Purification	Antibodies were produced by immunizing rabbits with synthetic phosphopeptide and KLH conjugates. Antibodies were purified by affinity-chromatography using epitope-specific phosphopeptide. Non-phospho specific antibodies were removed by chromatography using non-phosphopeptide.
Applications	WB, IH, IF
Species Reactivity	Human, Mouse, Rat, Bovine, Pig, Zebrafish
Specificity	The antibody detects endogenous level of Fyn only when phosphorylated at Tyrosine 530.
Immunogen Type	Peptide-KLH
Immunogen Description	Peptide sequence around phosphorylation site of Tyrosine 530 (P-Q-Y(p)-Q-P) derived from Human Fyn.
Target Name	Fyn
Modification	Phospho
Other Names	SLK, SYN, p59-FYN
Accession No.	Swiss-Prot#: P06241; NCBI Gene#: 2534; NCBI Protein#: NP_002028.1
Uniprot	P06241
GeneID	2534;
SDS-PAGE MW	59kd
Concentration	1.0mg/ml
Formulation	Supplied at 1.0mg/mL in phosphate buffered saline (without Mg ²⁺ and Ca ²⁺), pH 7.4, 150mM NaCl, 0.02% sodium azide and 50% glycerol.
Storage	Store at -20°C/1 year

Application Details

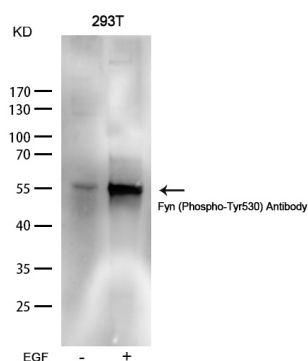
Predicted MW: 59kd

Western blotting: 1:500~1:1000

Images



Western blot analysis of extracts from Mouse brain tissue using Fyn (Phospho-Tyr530) Antibody #12008. The lane on the left is treated with the antigen-specific peptide.



Western blot analysis of extracts from 293T cells untreated or treated with EGF using Fyn (Phospho-Tyr530) Antibody #12008.

Background

Non-receptor tyrosine-protein kinase that plays a role in many biological processes including regulation of cell growth and survival, cell adhesion, integrin-mediated signaling, cytoskeletal remodeling, cell motility, immune response and axon guidance. Inactive FYN is phosphorylated on its C-terminal tail within the catalytic domain. Following activation by PKA, the protein subsequently associates with PTK2/FAK1, allowing PTK2/FAK1 phosphorylation, activation and targeting to focal adhesions. Involved in the regulation of cell adhesion and motility through phosphorylation of CTNNB1 (beta-catenin) and CTNND1 (delta-catenin). Regulates cytoskeletal remodeling by phosphorylating several proteins including the actin regulator WAS and the microtubule-associated proteins MAP2 and MAPT. Promotes cell survival by phosphorylating AGAP2/PIKE-A and preventing its apoptotic cleavage. Participates in signal transduction pathways that regulate the integrity of the glomerular slit diaphragm (an essential part of the glomerular filter of the kidney) by phosphorylating several slit diaphragm components including NPHS1, KIRREL and TRPC6. Plays a role in neural processes by phosphorylating DPYSL2, a multifunctional adapter protein within the central nervous system, ARHGAP32, a regulator for Rho family GTPases implicated in various neural functions, and SNCA, a small pre-synaptic protein. Participates in the downstream signaling pathways that lead to T-cell differentiation and proliferation following T-cell receptor (TCR) stimulation. Also participates in negative feedback regulation of TCR signaling through phosphorylation of PAG1, thereby promoting interaction between PAG1 and CSK and recruitment of CSK to lipid rafts. CSK maintains LCK and FYN in an inactive form. Promotes CD28-induced phosphorylation of VAV1.

Note: This product is for in vitro research use only