

GATA4 (Phospho-Ser262) Antibody

Catalog No: #12043

Package Size: #12043-1 50ul #12043-2 100ul

Orders: order@signalwayantibody.comSupport: tech@signalwayantibody.com

Description

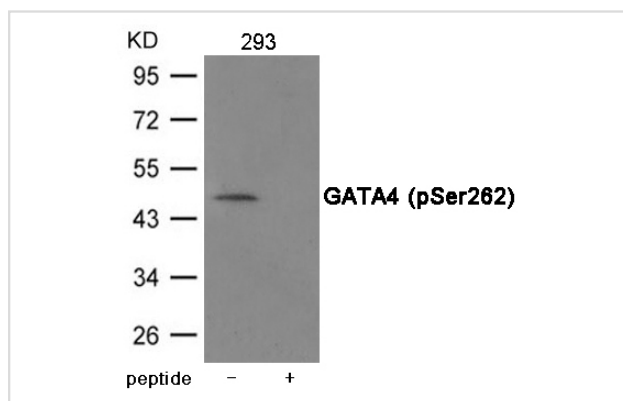
Product Name	GATA4 (Phospho-Ser262) Antibody
Host Species	Rabbit
Clonality	Polyclonal
Purification	Antibodies were produced by immunizing rabbits with synthetic phosphopeptide and KLH conjugates. Antibodies were purified by affinity-chromatography using epitope-specific phosphopeptide. Non-phospho specific antibodies were removed by chromatography using non-phosphopeptide.
Applications	WB
Species Reactivity	Hu Ms Rt
Specificity	The antibody detects endogenous level of GATA4 only when phosphorylated at Serine 262.
Immunogen Type	Peptide-KLH
Immunogen Description	Peptide sequence around phosphorylation site of Serine 262 (R-L-S(p)-A-S) derived from Human GATA4.
Target Name	GATA4
Modification	Phospho
Other Names	ASD2, VSD1
Accession No.	Swiss-Prot#: P43694; NCBI Gene#: 2626; NCBI Protein#: NP_002043.2
Uniprot	P43694
GeneID	2626;
SDS-PAGE MW	48kd
Concentration	1.0mg/ml
Formulation	Supplied at 1.0mg/mL in phosphate buffered saline (without Mg ²⁺ and Ca ²⁺), pH 7.4, 150mM NaCl, 0.02% sodium azide and 50% glycerol.
Storage	Store at -20°C/1 year

Application Details

Predicted MW: 48kd

Western blotting: 1:500~1:1000

Images



Western blot analysis of extracts from 293 cells using GATA4 (Phospho-Ser262) Antibody #12043. The lane on the right is treated with the antigen-specific peptide.

Background

Transcriptional activator. Binds to the consensus sequence 5'-AGATAG-3'. Acts as a transcriptional activator of ANF in cooperation with NKX2-5 By similarity. Promotes cardiac myocyte enlargement.

Note: This product is for in vitro research use only