

## CDC37 (Phospho-Ser13) Antibody

Catalog No: #12049



Package Size: #12049-1 50ul #12049-2 100ul

Orders: [order@signalwayantibody.com](mailto:order@signalwayantibody.com)Support: [tech@signalwayantibody.com](mailto:tech@signalwayantibody.com)

## Description

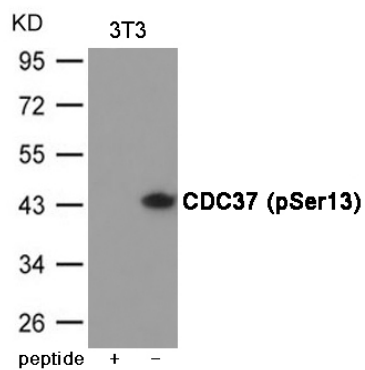
Product Name	CDC37 (Phospho-Ser13) Antibody
Host Species	Rabbit
Clonality	Polyclonal
Purification	Antibodies were produced by immunizing rabbits with synthetic phosphopeptide and KLH conjugates. Antibodies were purified by affinity-chromatography using epitope-specific phosphopeptide. Non-phospho specific antibodies were removed by chromatography using non-phosphopeptide.
Applications	WB
Species Reactivity	Hu Ms Rt
Specificity	The antibody detects endogenous level of CDC37 only when phosphorylated at Serine 13.
Immunogen Type	Peptide-KLH
Immunogen Description	Peptide sequence around phosphorylation site of Serine 13 (E-V-S(p)-D-D) derived from Human CDC37.
Target Name	CDC37
Modification	Phospho
Other Names	P50CDC37
Accession No.	Swiss-Prot#: Q16543; NCBI Gene#: 11140; NCBI Protein#: NP_008996.1
Uniprot	Q16543
GeneID	11140;
SDS-PAGE MW	44kd
Concentration	1.0mg/ml
Formulation	Supplied at 1.0mg/mL in phosphate buffered saline (without Mg <sup>2+</sup> and Ca <sup>2+</sup> ), pH 7.4, 150mM NaCl, 0.02% sodium azide and 50% glycerol.
Storage	Store at -20°C/1 year

## Application Details

Predicted MW: 44kd

Western blotting: 1:500~1:1000

## Images



Western blot analysis of extracts from 3T3 cells using CDC37 (Phospho-Ser13) Antibody #12049. The lane on the left is treated with the antigen-specific peptide.

## Background

Co-chaperone that binds to numerous kinases and promotes their interaction with the Hsp90 complex, resulting in stabilization and promotion of their activity.

Note: This product is for in vitro research use only