

## DRP-2 (Phospho-Thr514) Antibody

Catalog No: #12055

Package Size: #12055-1 50ul #12055-2 100ul

Orders: [order@signalwayantibody.com](mailto:order@signalwayantibody.com)Support: [tech@signalwayantibody.com](mailto:tech@signalwayantibody.com)

## Description

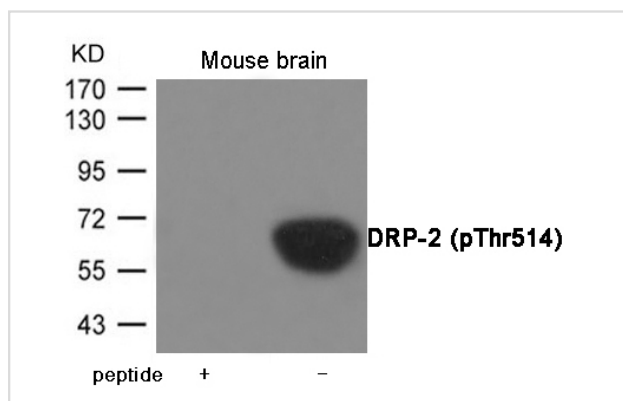
Product Name	DRP-2 (Phospho-Thr514) Antibody
Host Species	Rabbit
Clonality	Polyclonal
Purification	Antibodies were produced by immunizing rabbits with synthetic phosphopeptide and KLH conjugates. Antibodies were purified by affinity-chromatography using epitope-specific phosphopeptide. Non-phospho specific antibodies were removed by chromatography using non-phosphopeptide.
Applications	WB
Species Reactivity	Hu Ms Rt
Specificity	The antibody detects endogenous level of DRP-2 only when phosphorylated at Threonine 514.
Immunogen Type	Peptide-KLH
Immunogen Description	Peptide sequence around phosphorylation site of Threonine 514 (K-V-T(p)-P-A) derived from Human DRP-2.
Target Name	DRP-2
Modification	Phospho
Other Names	DRP2, N2A3, CRMP2, DRP-2, ULIP2
Accession No.	Swiss-Prot#: Q16555; NCBI Gene#: 1808; NCBI Protein#: NP_001184222.1
Uniprot	Q16555
GeneID	1808;
SDS-PAGE MW	65-70kd
Concentration	1.0mg/ml
Formulation	Supplied at 1.0mg/mL in phosphate buffered saline (without Mg <sup>2+</sup> and Ca <sup>2+</sup> ), pH 7.4, 150mM NaCl, 0.02% sodium azide and 50% glycerol.
Storage	Store at -20°C/1 year

## Application Details

Predicted MW: 65-70kd

Western blotting: 1:500~1:1000

## Images



Western blot analysis of extracts from Mouse brain tissue using DRP-2 (Phospho-Thr514) Antibody #12055. The lane on the left is treated with the antigen-specific peptide.

## Background

Plays a role in neuronal development and polarity, as well as in axon growth and guidance, neuronal growth cone collapse and cell migration. Necessary for signaling by class 3 semaphorins and subsequent remodeling of the cytoskeleton. By similarity. Plays a role in neuron projection morphogenesis.

Note: This product is for in vitro research use only