

## GFAP (Phospho-Ser38) Antibody

Catalog No: #12056

Package Size: #12056-1 50ul #12056-2 100ul

Orders: [order@signalwayantibody.com](mailto:order@signalwayantibody.com)Support: [tech@signalwayantibody.com](mailto:tech@signalwayantibody.com)

## Description

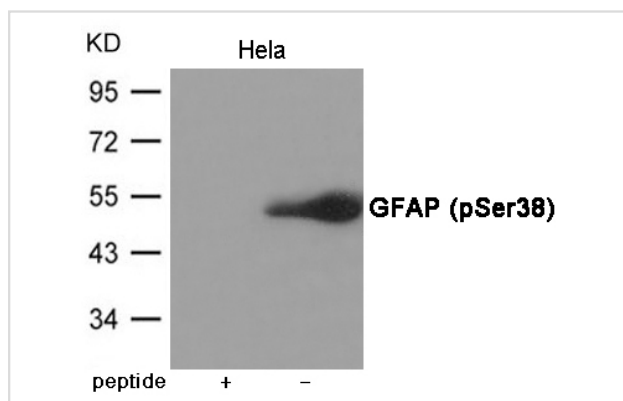
Product Name	GFAP (Phospho-Ser38) Antibody
Host Species	Rabbit
Clonality	Polyclonal
Purification	Antibodies were produced by immunizing rabbits with synthetic phosphopeptide and KLH conjugates. Antibodies were purified by affinity-chromatography using epitope-specific phosphopeptide. Non-phospho specific antibodies were removed by chromatography using non-phosphopeptide.
Applications	WB
Species Reactivity	Hu
Specificity	The antibody detects endogenous level of GFAP only when phosphorylated at Serine 38.
Immunogen Type	Peptide-KLH
Immunogen Description	Peptide sequence around phosphorylation site of Serine 38 (R-L-S(p)-L-A) derived from Human GFAP.
Target Name	GFAP
Modification	Phospho
Other Names	Glial fibrillary acidic protein, astrocyte
Accession No.	Swiss-Prot#: P14136; NCBI Gene#: 2670; NCBI Protein#: NP_001124491.1
Uniprot	P14136
GeneID	2670;
SDS-PAGE MW	50kd
Concentration	1.0mg/ml
Formulation	Supplied at 1.0mg/mL in phosphate buffered saline (without Mg <sup>2+</sup> and Ca <sup>2+</sup> ), pH 7.4, 150mM NaCl, 0.02% sodium azide and 50% glycerol.
Storage	Store at -20°C/1 year

## Application Details

Predicted MW: 50kd

Western blotting: 1:500~1:1000

## Images



Western blot analysis of extracts from HeLa cells using GFAP (Phospho-Ser38) Antibody #12056. The lane on the left is treated with the antigen-specific peptide.

## Background

GFAP, a class-III intermediate filament, is a cell-specific marker that, during the development of the central nervous system, distinguishes astrocytes from other glial cells.

Note: This product is for in vitro research use only