

## CDC25A (Phospho-Ser124) Antibody

Catalog No: #12073

Package Size: #12073-1 50ul #12073-2 100ul

Orders: [order@signalwayantibody.com](mailto:order@signalwayantibody.com)Support: [tech@signalwayantibody.com](mailto:tech@signalwayantibody.com)

## Description

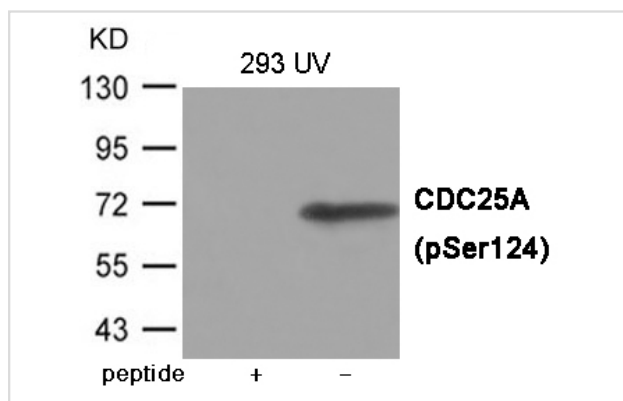
Product Name	CDC25A (Phospho-Ser124) Antibody
Host Species	Rabbit
Clonality	Polyclonal
Purification	Antibodies were produced by immunizing rabbits with synthetic phosphopeptide and KLH conjugates. Antibodies were purified by affinity-chromatography using epitope-specific phosphopeptide. Non-phospho specific antibodies were removed by chromatography using non-phosphopeptide.
Applications	WB
Species Reactivity	Hu Ms Rt
Specificity	The antibody detects endogenous level of CDC25A only when phosphorylated at Serine 124.
Immunogen Type	Peptide-KLH
Immunogen Description	Peptide sequence around phosphorylation site of Serine 124 (S-H-S(p)-D-S) derived from Human CDC25A.
Target Name	CDC25A
Modification	Phospho
Other Names	CDC25A2
Accession No.	Swiss-Prot#: P30304; NCBI Gene#: 993; NCBI Protein#: NP_001780.2
Uniprot	P30304
GeneID	993;
SDS-PAGE MW	70kd
Concentration	1.0mg/ml
Formulation	Supplied at 1.0mg/mL in phosphate buffered saline (without Mg <sup>2+</sup> and Ca <sup>2+</sup> ), pH 7.4, 150mM NaCl, 0.02% sodium azide and 50% glycerol.
Storage	Store at -20°C/1 year

## Application Details

Predicted MW: 70kd

Western blotting: 1:500~1:1000

## Images



Western blot analysis of extracts from 293 cells with UV using CDC25A (Phospho-Ser124) Antibody #12073. The lane on the left is treated with the antigen-specific peptide.

## Background

Tyrosine protein phosphatase which functions as a dosage-dependent inducer of mitotic progression. Directly dephosphorylates CDK1 and stimulates its kinase activity. Also dephosphorylates CDK2 in complex with cyclin E, in vitro.

Note: This product is for in vitro research use only