

## Smad1 (Phospho-Ser187) Antibody

Catalog No: #12074

Package Size: #12074-1 50ul #12074-2 100ul

Orders: [order@signalwayantibody.com](mailto:order@signalwayantibody.com)Support: [tech@signalwayantibody.com](mailto:tech@signalwayantibody.com)

## Description

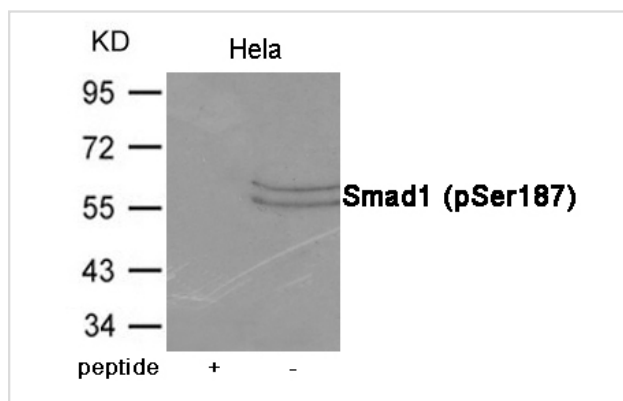
Product Name	Smad1 (Phospho-Ser187) Antibody
Host Species	Rabbit
Clonality	Polyclonal
Purification	Antibodies were produced by immunizing rabbits with synthetic phosphopeptide and KLH conjugates. Antibodies were purified by affinity-chromatography using epitope-specific phosphopeptide. Non-phospho specific antibodies were removed by chromatography using non-phosphopeptide.
Applications	WB
Species Reactivity	Hu Ms
Specificity	The antibody detects endogenous level of Smad1 only when phosphorylated at Serine 187.
Immunogen Type	Peptide-KLH
Immunogen Description	Peptide sequence around phosphorylation site of Serine 187 (P-H-S(p)-P-N) derived from Human Smad1.
Target Name	Smad1
Modification	Phospho
Other Names	BSP1, JV41, BSP-1, JV4-1, MADH1
Accession No.	Swiss-Prot#: Q15797; NCBI Gene#: 4086; NCBI Protein#: NP_001003688.1
Uniprot	Q15797
GeneID	4086;
SDS-PAGE MW	55,60kd
Concentration	1.0mg/ml
Formulation	Supplied at 1.0mg/mL in phosphate buffered saline (without Mg <sup>2+</sup> and Ca <sup>2+</sup> ), pH 7.4, 150mM NaCl, 0.02% sodium azide and 50% glycerol.
Storage	Store at -20°C/1 year

## Application Details

Predicted MW: 55,60kd

Western blotting: 1:500~1:1000

## Images



Western blot analysis of extracts from Hela cells using Smad1 (Phospho-Ser187) Antibody #12074. The lane on the left is treated with the antigen-specific peptide.

## Background

Transcriptional modulator activated by BMP (bone morphogenetic proteins) type 1 receptor kinase. SMAD1 is a receptor-regulated SMAD (R-SMAD). SMAD1/OAZ1/PSMB4 complex mediates the degradation of the CREBBP/EP300 repressor SNIP1.

Note: This product is for in vitro research use only