

FKHR(Ab-319) Antibody

Catalog No: #21161

Package Size: #21161-1 50ul #21161-2 100ul

Orders: order@signalwayantibody.com

Support: tech@signalwayantibody.com

Description

Product Name	FKHR(Ab-319) Antibody
Host Species	Rabbit
Clonality	Polyclonal
Purification	Antibodies were produced by immunizing rabbits with synthetic peptide and KLH conjugates. Antibodies were purified by affinity-chromatography using epitope-specific peptide.
Applications	WB IHC
Species Reactivity	Hu Ms
Specificity	The antibody detects endogenous level of total FKHR protein.
Immunogen Type	Peptide-KLH
Immunogen Description	Peptide sequence around aa. 317~321 (T-S-S-N-A) derived from Human FKHR.
Target Name	FKHR
Other Names	FKHR; FOXO1;
Accession No.	Swiss-Prot: Q12778NCBI Protein: NP_002006.2
Uniprot	Q12778
GeneID	2308;
Concentration	1.0mg/ml
Formulation	Supplied at 1.0mg/mL in phosphate buffered saline (without Mg ²⁺ and Ca ²⁺), pH 7.4, 150mM NaCl, 0.02% sodium azide and 50% glycerol.
Storage	Store at -20°C for long term preservation (recommended). Store at 4°C for short term use.

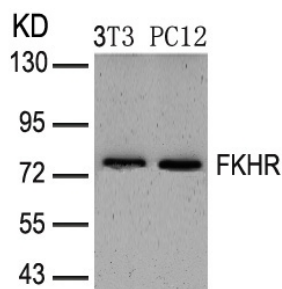
Application Details

Predicted MW: 78-82 kd

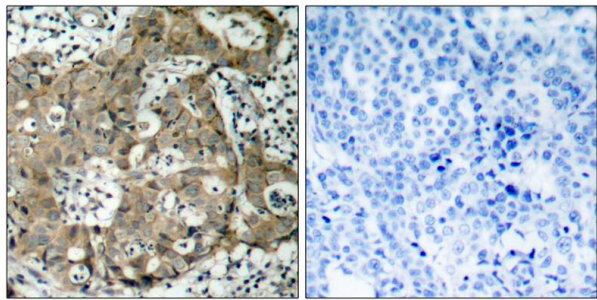
Western blotting: 1:500~1:1000

Immunohistochemistry: 1:50~1:100

Images



Western blot analysis of extracts from 3T3 and PC12 cells using FKHR(Ab-319) Antibody #21161.



Immunohistochemical analysis of paraffin-embedded human breast carcinoma tissue using FKHR(Ab-319) Antibody #21161(left) or the same antibody preincubated with blocking peptide(right).

Background

Transcription factor.

Note: This product is for in vitro research use only