

# Mouse anti-Human CD4, PE Conjugated mAb

Catalog No: #28012

Orders: [order@signalwayantibody.com](mailto:order@signalwayantibody.com)Support: [tech@signalwayantibody.com](mailto:tech@signalwayantibody.com)

## Description

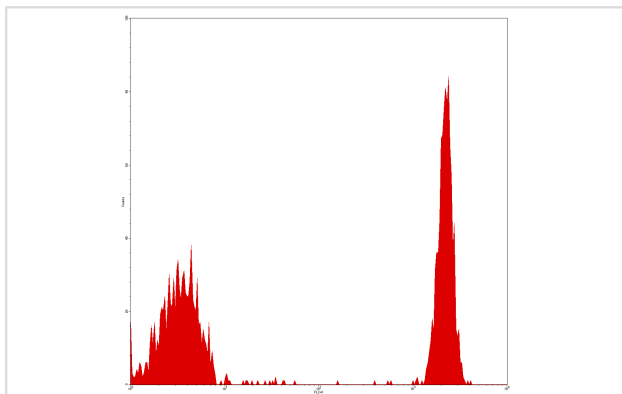
Product Name	Mouse anti-Human CD4, PE Conjugated mAb
Host Species	Mouse
Clonality	Monoclonal
Clone No.	4AT4
Isotype	IgG2b
Applications	FC
Species Reactivity	Hu
Conjugates	PE
Target Name	CD4
Formulation	Phosphate-buffered solution, pH 7.4, containing 0.09% sodium azide and 0.2% (w/v) BSA
Storage	Store at 4°C. DO NOT FREEZE. LIGHT SENSITIVE MATERIAL.

## Application Details

Vol.per.Test: 10 &amp;mu;l/Test

Notice: This reagent has been pre-diluted for use at recommended volume per test in flow cytometry analysis. Typically add 10ul of this reagent to 100&mu;l of experimental sample with 1 X 10<sup>6</sup> cells per test. Please refer to the detailed protocol when you perform a test.

## Images



Human peripheral blood lymphocytes analyzed with PE CD4 mAb

## Background

CD4, also known as T4, is a 55 kD single chain transmembrane glycoprotein and belongs to immunoglobulin superfamily. CD4 is found on most thymocytes, a subset of T cells and at low level on monocytes/macrophages.

CD4 is a co-receptor involved in immune response (co-receptor activity in binding to MHC class II molecules) and HIV infection (CD4 is primary receptor for HIV-1 surface glycoprotein gp120). CD4 regulates T-cell activation, T/B-cell adhesion, T-cell differentiation, T-cell selection and signal transduction.

1. Ledbetter, J et al. (1981) J Exp Med 153:310-323.
2. Haynes, B et al. (1986) Leukocyte Typing II: Human T lymphocytes. New York: Springer-Verlag; 3-30.
3. Clevers H et al. (1988). Ann Rev Immunol 6 : 629-662.

4. Barclay, N et al. (1993). The Leucocyte Factsbook. Academic Press. San Diego.

---

Note: This product is for in vitro research use only