

Mouse anti-Human CD11a, FITC Conjugated mAb

Catalog No: #28039

Orders: order@signalwayantibody.com

Support: tech@signalwayantibody.com

Description

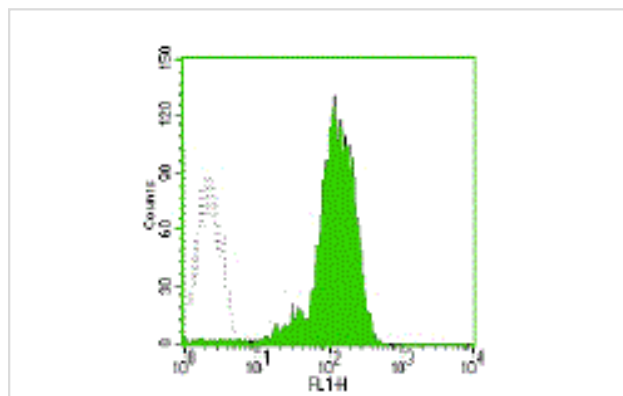
Product Name	Mouse anti-Human CD11a, FITC Conjugated mAb
Host Species	Mouse
Clonality	Monoclonal
Clone No.	4A122
Isotype	IgG1
Applications	FC
Species Reactivity	Hu
Conjugates	FITC
Target Name	CD11a
Formulation	Phosphate-buffered solution, pH 7.4, containing 0.09% sodium azide and 0.2% (w/v) BSA
Storage	Store at 4°C. DO NOT FREEZE. LIGHT SENSITIVE MATERIAL.

Application Details

Vol.per.Test: 10 &mu;l/Test

Notice: This reagent has been pre-diluted for use at recommended volume per test in flow cytometry analysis. Typically add 10ul of this reagent to 100μl of experimental sample with 1 X 10⁶ cells per test. Please refer to the detailed protocol when you perform a test.

Images



Human peripheral blood granulocytes analyzed with FITC CD11a mAb

Background

4A122 reacts with CD11a, a 180 kDa molecule. CD11a is the α chain of the leukocyte function associated antigen-1 (LFA-1a), and is expressed on all leukocytes including T and B cells, monocytes, and granulocytes, but is absent on non-hematopoietic tissue and human platelets. CD11/CD18 (LFA-1), a member of the integrin subfamily, is a leukocyte adhesion receptor that is essential for cell-to-cell contact, such as lymphocyte adhesion, NK and T-cell cytotoxicity, and T-cell proliferation. CD11/CD18 is also involved in the interaction of leukocytes with endothelium.

*CD11a antibody has been used to reduce graft failure for bone marrow grafts in immunodeficient children. This clone is cross reactive with non-human primate.

- Schlossman, S et al. (1995) Leucocyte Typing V: White Cell Differentiation Antigens. Oxford University Press. New York.
- Lub M et al. (1995) Immunol. Today 16:479.

Note: This product is for in vitro research use only