

Mouse IgG2a Isotype Control, PE Conjugated mAb

Catalog No: #28275

Orders: order@signalwayantibody.comSupport: tech@signalwayantibody.com

Description

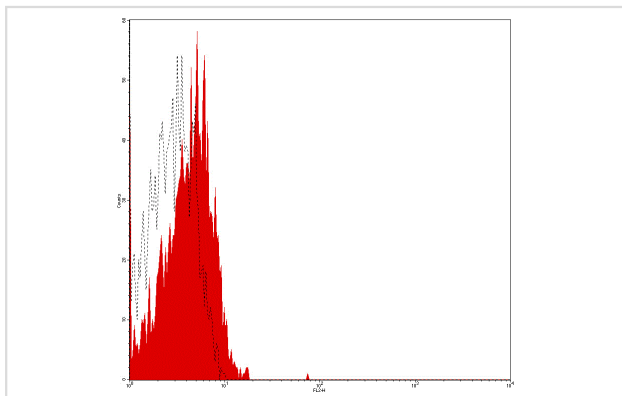
Product Name	Mouse IgG2a Isotype Control, PE Conjugated mAb
Host Species	Mouse
Clonality	Monoclonal
Clone No.	CloneoO 4A4C4
Isotype	IgG2a
Applications	FC
Conjugates	PE
Target Name	IgG2a
Formulation	Phosphate-buffered solution, pH 7.4, containing 0.09% sodium azide and 0.2% (w/v) BSA
Storage	Store at 4°C. DO NOT FREEZE. LIGHT SENSITIVE MATERIAL.

Application Details

Vol.per.Test: 10 &mu;l/Test

Notice: This reagent has been pre-diluted for use at recommended volume per test in flow cytometry analysis. Typically add 10ul of this reagent to 100μl of experimental sample with 1 X 10⁶ cells per test. Please refer to the detailed protocol when you perform a test.

Images



Human peripheral blood lymphocytes analyzed with PE
Mouse IgG2a Isotype Control mAb

Background

This antibody can be used as a mouse IgG2a isotype control in flow cytometry and other applications.

Note: This product is for in vitro research use only